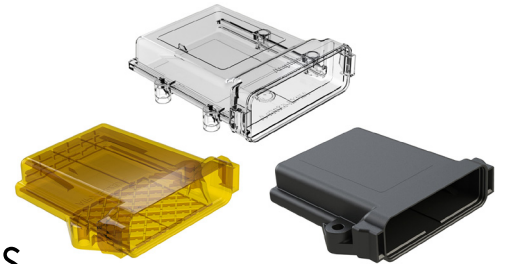




ARMORIPX™ Family



The Clear Choice for Sealed Enclosures

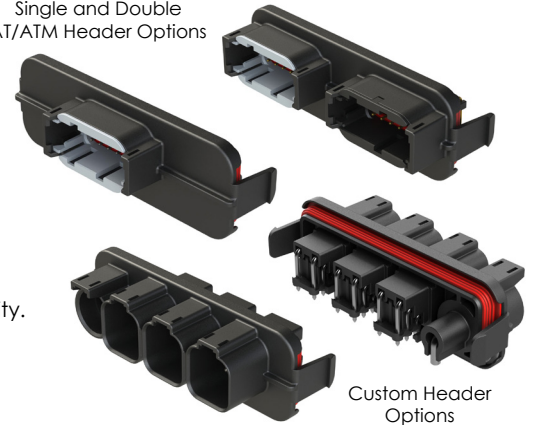
The Amphenol **Armor IPX™ Family of Sealed Enclosures** provides superior protection for printed circuit boards and electronic control modules in harsh environments and off-road applications. Available in two (2) sizes, as well as three (3) different material types: Clear Thermoplastic, Black Thermoplastic or Ultem® (Transparent Amber). Simplified installation is accomplished via a rugged tandem through-hole design for ease of mounting and includes optional environmental venting. The **Armor IPX™** electrical interface is established with the compact **AT/ATM Header Systems** featuring optional keying and sealed 90° molded pins. The snap-in headers quickly and securely attach to the **Armor IPX™** enclosure and mate with standard **AT/ATM Series** plugs. **Armor IPX™ Sealed Enclosures** and **AT/ATM Header Systems** are compatible with industry standard EEC enclosures.

Key Features

- Available in Standard and Large sizes
- Intermatable with industry standard connectors
- Optional header configurations
 - AT Series™ 12, 24, 36, 48 I/O (A, B, C & D Keying)
 - ATM Series™ 12, 24 I/O (A, B, C & D Keying)
- Rugged tandem through-hole design for ease of mounting
- Snap-in headers establish ease of interface with PCB
- Cross-hatch design increases venting protection
- Resistant to most fluids used in industrial applications



Single and Double AT/ATM Header Options



Available Options

- Custom/Blank Headers available to assist in establishing additional connector interface flexibility.
- Vented enclosures (environmental venting)
- Enclosures available in Clear, Black or Ultem® (Transparent Amber) material
- AT/ATM Headers with optional tin-or gold-plated pins

Technical Specifications

Temperature Range	Clear Enclosure: -40°C to +120°C Black Enclosure: -55°C to +125°C Ultem® (Transparent Amber) Encl: -55°C to +125°C AT/ATM Headers: -55°C to +125°C
Temperature (Humidity)	320 Hr
Temperature (Life)	1000 Hr
UV Exposure	500 Hr
Max. Current (AMP)	13A (AT Headers); 7.5A (ATM Headers)
IP Ratings	IP67/69K (w/ Header Installed)
Contact Resistance	<6mΩ (AT Headers); <11mΩ (ATM Headers)
Insulation Resistance	>1000MΩ @ 25°C (AT/ATM Headers)
Current Cycling	500 Hour (AT/ATM Headers)

Material	Clear Enclosure: Natural Polycarbonate Black Enclosure: PA66 Ultem® (Transparent Amber) Enclosure: PEI AT/ATM Headers: PA46
Salt Fog	96 Hr
Vibration	10 to 2000Hz – 20g peak level – XYZ – 24 Hr
Shock	50g - 20 pulses
Pins	Copper Alloy w Tin or Gold Plating (AT™ Headers) Brass, Post Tin or Gold Plated (ATM™ Headers)
Sealing Material	Silicone Rubber (AT/ATM Headers)
RoHS	Compliant



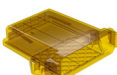







A Series™ Family

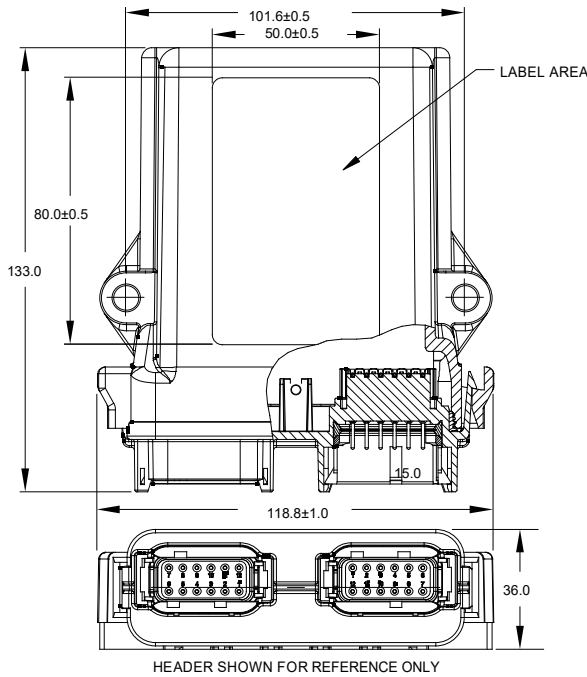


Standard products. Custom solutions
Customer Service +1 800 394 7732

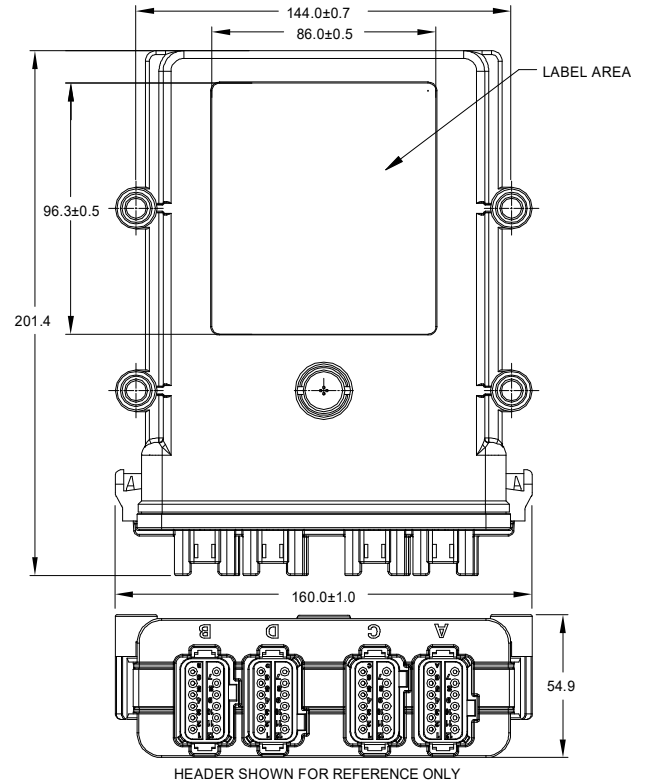
Armor IPX Series™ Enclosures & Headers

Image	Part Number	Description	Amp	Volt
	AIPXE-325X4A-E017	Armor IPX™, Standard, Clear, Thermoplastic Enclosure, Vent Hole, Op. Temp. Range: -40°C to +120°C	-	-
	AIPXE-325X4B-E017	Armor IPX™, Standard, Clear, Thermoplastic Enclosure, w/out Vent Hole, Op. Temp. Range: -40°C to +120°C	-	-
	AIPXE-5X650A-E017	Armor IPX™, Large, Clear, Thermoplastic Enclosure, Vent Hole, Op. Temp. Range: -40°C to +120°C	-	-
	AIPXE-5X650B-E017	Armor IPX™, Large, Clear, Thermoplastic Enclosure, w/out Vent Hole, Op. Temp. Range: -40°C to +120°C	-	-
	AIPXE-325X4A	Armor IPX™, Standard, Black, Thermoplastic Enclosure, Vent Hole, Op. Temp. Range: -55°C to +125°C	-	-
	AIPXE-325X4B	Armor IPX™, Standard, Black, Thermoplastic Enclosure, w/out Vent Hole, Op. Temp. Range: -55°C to +125°C	-	-
	AIPXE-5X650A	Armor IPX™, Large, Black, Thermoplastic Enclosure, Vent Hole, Op. Temp. Range: -55°C to +125°C	-	-
	AIPXE-5X650B	Armor IPX™, Large, Black, Thermoplastic Enclosure, w/out Vent Hole, Op. Temp. Range: -55°C to +125°C	-	-
	AIPXE-325X4A-E016	Armor IPX™, Standard, Ulfem® (Amber), Enclosure, Vent Hole, Op. Temp. Range: -55°C to +125°C	-	-
	AIPXE-325X4B-E016	Armor IPX™, Standard, Ulfem® (Amber), Enclosure, w/out Vent Hole, Op. Temp. Range: -55°C to +125°C	-	-
	AT13-12PA-R015	Armor IPX™, Large, AT Header, Thermoplastic, 1x12 Position, Size 16, A Key - Tin Plating	13A	250V
	AT13-24PAB-BM03	Armor IPX™, Large, AT Header, Thermoplastic, 2x12 Position, Size 16, AB Key - Tin Plating	13A	250V
	AT13-36PABC-BM03	Armor IPX™, Large, AT Header, Thermoplastic, 3x12 Position, Size 16, ABC Key - Tin Plating	13A	250V
	AT13-48PABCD-BM03	Armor IPX™, Large, AT Header, Thermoplastic, 4x12 Position, Size 16, ABCD Key - Tin Plating	13A	250V
	AT13-12PA-GR02	Armor IPX™, Large, AT Header, Thermoplastic, 1x12 Position, Size 16, A Key - Gold Plating	13A	250V
	AT13-24PAB-BM01	Armor IPX™, Large, AT Header, Thermoplastic, 2x12 Position, Size 16, AB Key - Gold Plating	13A	250V
	AT13-36PABC-BM01	Armor IPX™, Large, AT Header, Thermoplastic, 3x12 Position, Size 16, ABC Key - Gold Plating	13A	250V
	AT13-48PABCD-BM01	Armor IPX™, Large, AT Header, Thermoplastic, 4x12 Position, Size 16, ABCD Key - Gold Plating	13A	250V
	ATM13-12PA-GR01	Armor IPX™, Standard, ATM Header, Thermoplastic, 1x12 Position, Size 20, A Key - Gold Plating	7.5A	250V
	ATM13-12PB-GR01	Armor IPX™, Standard, ATM Header, Thermoplastic, 1x12 Position, Size 20, B Key - Gold Plating	7.5A	250V
	ATM13-12PC-GR01	Armor IPX™, Standard, ATM Header, Thermoplastic, 1x12 Position, Size 20, C Key - Gold Plating	7.5A	250V
	ATM13-12PD-GR01	Armor IPX™, Standard, ATM Header, Thermoplastic, 1x12 Position, Size 20, D Key - Gold Plating	7.5A	250V
	ATM13-12PA-R008	Armor IPX™, Standard, ATM Header, Thermoplastic, 1x12 Position, Size 20, A Key - Tin Plating	7.5A	250V
	ATM13-12PB-R008	Armor IPX™, Standard, ATM Header, Thermoplastic, 1x12 Position, Size 20, B Key - Tin Plating	7.5A	250V
	ATM13-12PC-R008	Armor IPX™, Standard, ATM Header, Thermoplastic, 1x12 Position, Size 20, C Key - Tin Plating	7.5A	250V
	ATM13-12PD-R008	Armor IPX™, Standard, ATM Header, Thermoplastic, 1x12 Position, Size 20, D Key - Tin Plating	7.5A	250V
	ATM13-12PA-12PB-BM01	Armor IPX™, Standard, ATM Header, Thermoplastic, 2x12 Position, Size 20, A&B Key - Gold Plating	7.5A	250V
	ATM13-12PA-12PC-BM01	Armor IPX™, Standard, ATM Header, Thermoplastic, 2x12 Position, Size 20, A&C Key - Gold Plating	7.5A	250V
	ATM13-12PA-12PD-BM01	Armor IPX™, Standard, ATM Header, Thermoplastic, 2x12 Position, Size 20, A&D Key - Gold Plating	7.5A	250V
	ATM13-12PB-12PC-BM01	Armor IPX™, Standard, ATM Header, Thermoplastic, 2x12 Position, Size 20, B&C Key - Gold Plating	7.5A	250V
	ATM13-12PB-12PD-BM01	Armor IPX™, Standard, ATM Header, Thermoplastic, 2x12 Position, Size 20, B&D Key - Gold Plating	7.5A	250V
	ATM13-12PC-12PD-BM01	Armor IPX™, Standard, ATM Header, Thermoplastic, 2x12 Position, Size 20, C&D Key - Gold Plating	7.5A	250V
	ATM13-12PA-12PB-BM03	Armor IPX™, Standard, ATM Header, Thermoplastic, 2x12 Position, Size 20, A&B Key - Tin Plating	7.5A	250V
	ATM13-12PA-12PC-BM03	Armor IPX™, Standard, ATM Header, Thermoplastic, 2x12 Position, Size 20, A&C Key - Tin Plating	7.5A	250V
	ATM13-12PA-12PD-BM03	Armor IPX™, Standard, ATM Header, Thermoplastic, 2x12 Position, Size 20, A&D Key - Tin Plating	7.5A	250V
	ATM13-12PB-12PC-BM03	Armor IPX™, Standard, ATM Header, Thermoplastic, 2x12 Position, Size 20, B&C Key - Tin Plating	7.5A	250V
	ATM13-12PB-12PD-BM03	Armor IPX™, Standard, ATM Header, Thermoplastic, 2x12 Position, Size 20, B&D Key - Tin Plating	7.5A	250V
	ATM13-12PC-12PD-BM03	Armor IPX™, Standard, ATM Header, Thermoplastic, 2x12 Position, Size 20, C&D Key - Tin Plating	7.5A	250V
	AIPXE-325XBP-01	ArmorIPX™, Standard, Black, Blank Header Plate, Thermoplastic	-	-
	AIPXE-5X650BP-01	ArmorIPX™, Large, Black, Blank Header Plate, Thermoplastic	-	-

Standard ArmorIPX™ Enclosure Dimensions (mm)



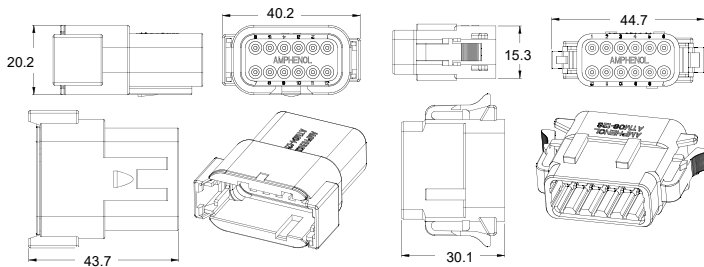
Large ArmorIPX™ Enclosure Dimensions (mm)



Standard ATM Series™ Dimensions (mm)

Receptacle

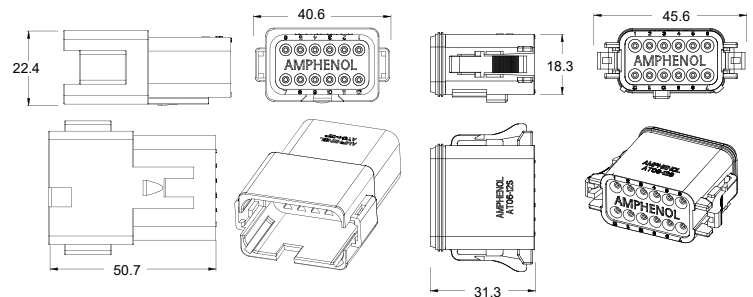
Plug



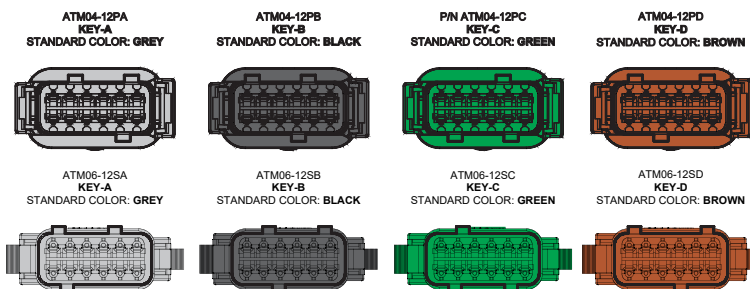
Standard AT Series™ Dimensions (mm)

Receptacle

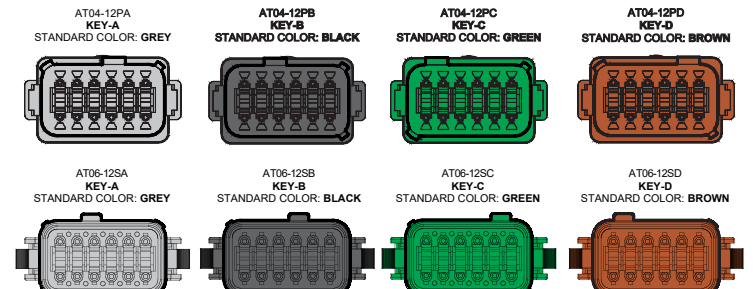
Plug



Standard ATM Series™ Keying Layouts



Standard AT Series™ Keying Layouts



For more information, contact: Customer Service, +1 800 394 7732, csr@amphenol-sine.com