

AICC Power Solutions EV Charging

Discover the world leader in
power solutions!

**Amphenol Information Communications
and Commercial Products**

***Power
Solutions***

Amphenol ICC

AICC Power Solutions

Market-leading solutions



Broad portfolio of Products

We offer the largest range of products for power distribution, supporting power requirements from **10A – 1000A+**

- ✓ BarKlip®
- ✓ BarKlip® I/O
- ✓ PwrBlade®
- ✓ PwrBlade+®
- ✓ PwrBlade+® I/O
- ✓ CoolPower® EV
- ✓ EazyPwr™



Tailored Solutions

Our dedicated team of engineers are able to provide innovative and cost-effective solutions to meet your exact specifications

- ✓ IP69k Sealing
- ✓ Field terminable
- ✓ Modular tooling
- ✓ Integrated fuses
- ✓ Blind-mate guides
- ✓ Multiple configurations
- ✓ Multiple voltages

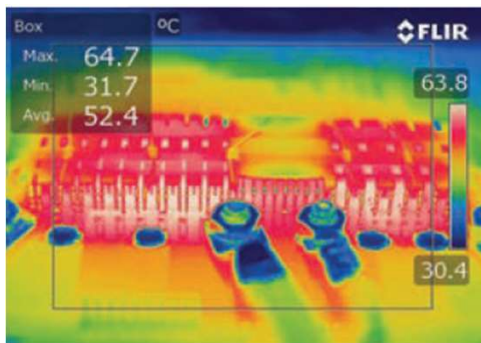


AICC Power Solutions has the experience and global footprint to respond quickly and efficiently to customer needs.

Always a strategic Partner

- We go to great lengths to ensure quality and long-term reliability of our products
- Temperature monitoring and testing in extreme environments
- 20+ years of Power contact development and market leadership

- Two State-of-the-art test labs
- Globally staffed R&D team
- High volume, cost-effective global manufacturing



In-house thermal monitoring for extreme environments



Independent conducting beams (BarKlip®) for improved reliability



Our plating technology allows us to offer the most *Energy Efficient* products available.



High Performance Electro Plating

AGT[®]



GCS[®]



As power consumption and energy costs continue to increase, our engineers have focused on solutions that use less energy and offer energy savings to our customers; supporting the next generation of power distribution architectures.

Wide range of products available



Power Module

Varying power requirements

PwrBlade+®

PwrBlade+® I/O

CoolPower® EV

BarKlip®

BarKlip® I/O



Level 2 Chargers

80A 240V
3.3kW – 22kW

PwrBlade®

PwrBlade+®

PwrBlade+® I/O

CoolPower® EV



Level 3 Chargers

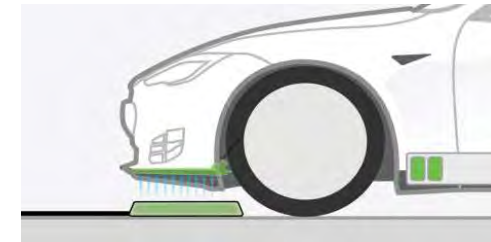
100A 480V
22kW – 50kW+

PwrBlade+®

PwrBlade+® I/O

BarKlip®

BarKlip® I/O



Wireless/Underground

80A 240V
3.3kW – 22kW

PwrBlade+® I/O

CoolPower® EV

EazyPwr™

AICC Power Solutions

PwrBlade® Solutions



I/O



PwrBlade® I/O
36A/contact



PwrBlade+® I/O
60A/contact



PwrBlade® TouchProof I/O
70A/contact

Products for level 2 & 3 EV Chargers / Power Modules

BtB



PwrBlade®
36A/contact



PwrBlade+®
56A/contact



PwrBlade® ULTRA
75A/contact



PwrBlade® ULTRA HD
75A/contact

AICC Power Solutions

Power Modules & Liquid Cooling



Our dedicated team of engineers are able to provide innovative and cost-effective solutions to meet any specifications.

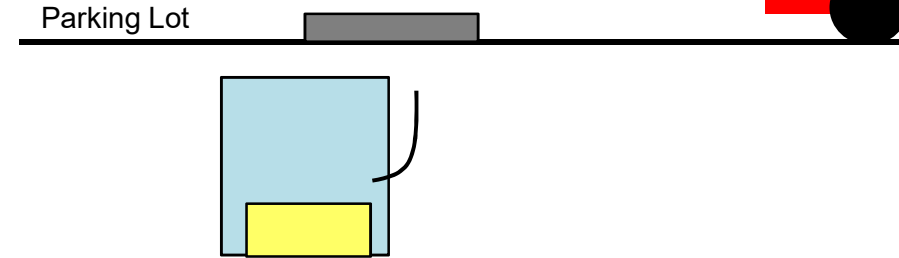
- ✓ Power module
- ✓ Charging pile
- ✓ Rack-mounted busbar
- ✓ Sealed/harsh applications



Power module

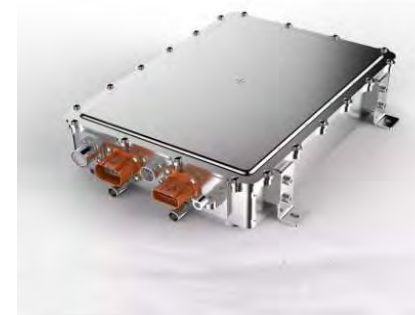
- 3 Phase 16kW output
- AC input DC output
- Voltage Range 150-500V
- Hot plug

PwrBlade®



Sealed power module

- Requires IP67 Rating
- 80-120A
- Up to 1500V required



Liquid cooled power module

- 3 Phase 22-350kW output
- Separate electric and cooling systems
- Voltage Range 240-800V

CoolPower®

CoolPower® Slim Drawer



- Low profile, 10.8mm above board
- Up to 60A per pin
- First mate last break sequencing for hot swap applications

CoolPower® Slim Drawer Mini



- Small footprint 5.6mm x 14mm
- Up to 35A per pin
- Right angle, vertical, and orthogonal configurations

CoolPower® EV

- Up to 250A per pin
- Configurable Power + Signal contacts
- Half-bullet guides for additional gatherability in blind mate applications
- Multiple latching and panel-mount terminations available



AICC Power Solutions

Level 2 EV Chargers



Level 2 Chargers

PwrBlade®



PwrBlade+®



PwrBlade+® I/O

- Modular power + signal contacts
- Low profile for improved airflow
- Right-angle/vertical configurations

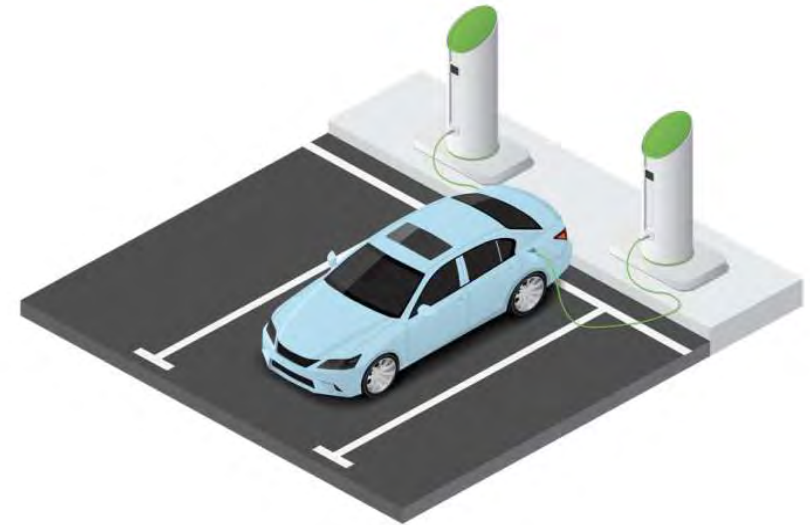
EazyPwr™

PwrBlade+® I/O

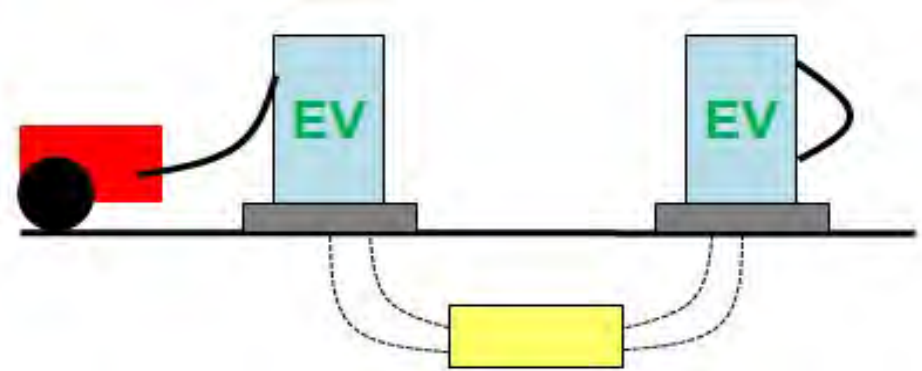


CoolPower® EV

- Blind-mate guides
- AC/DC/Signal contact options
- Up to 250A per pin



Ideal solutions for an internal power module that require a board-to-board connection



Rugged blind-mate guides are integrated to make installation easier in the field

BarKlip® Series

I/O



BarKlip® BK100 I/O
100A



BarKlip® BK200 I/O
200A



Products for level 3+ chargers

PCB/Busbar



BarKlip® XP1000
1000A



BarKlip® XP500
500A



BarKlip® XP250
250A



BarKlip® BK300
300A



BarKlip® BK150
150A

AICC Power Solutions

Level 3 EV Chargers



BarKlip® I/O

BarKlip®

- Mates to busbar application
- Ultrasonic welding between cable and contacts for reliability
- Low contact resistance 0.2mΩ (end-of-life)



Level 3 Chargers

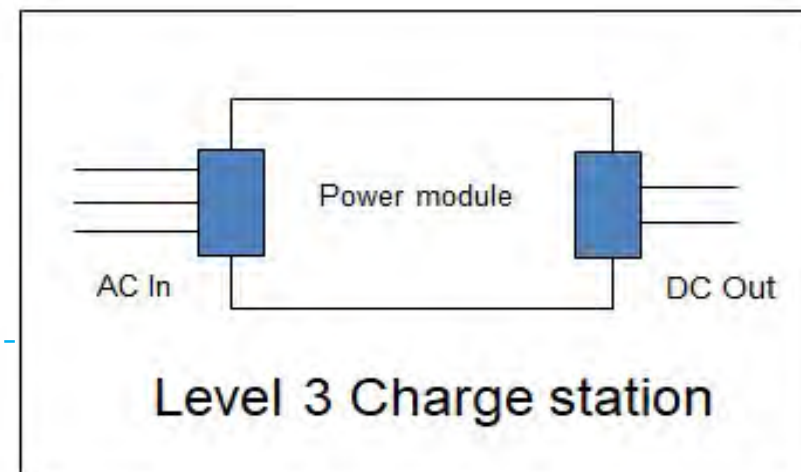
The BarKlip® series is frequently used in applications that have higher power requirements such as a rack-mounted power module



PwrBlade+® I/O

CoolPower® EV

- Multiple configurations and termination styles
- Up to 60A per contact
- Can be used for AC-in DC-out configurations



Our I/O solutions are integrated in charging piles that need to convert AC power from the grid to DC power to the vehicle

EazyPwr™ Series

Design a custom solution with our EazyPwr™ components

- + Field termination
- + Power contacts: 20A - 100A
- + Application range: 48V - 480V
- + Outdoor/water sealing technology
- + Optional Fused safety



*Easy to replace cable

*Easy to mate/unmate



AICC Power Solutions

Wireless/Underground Charging



AICC Power Solutions can support applications that require sealing for wire-to-wire or wire-to-board configurations.

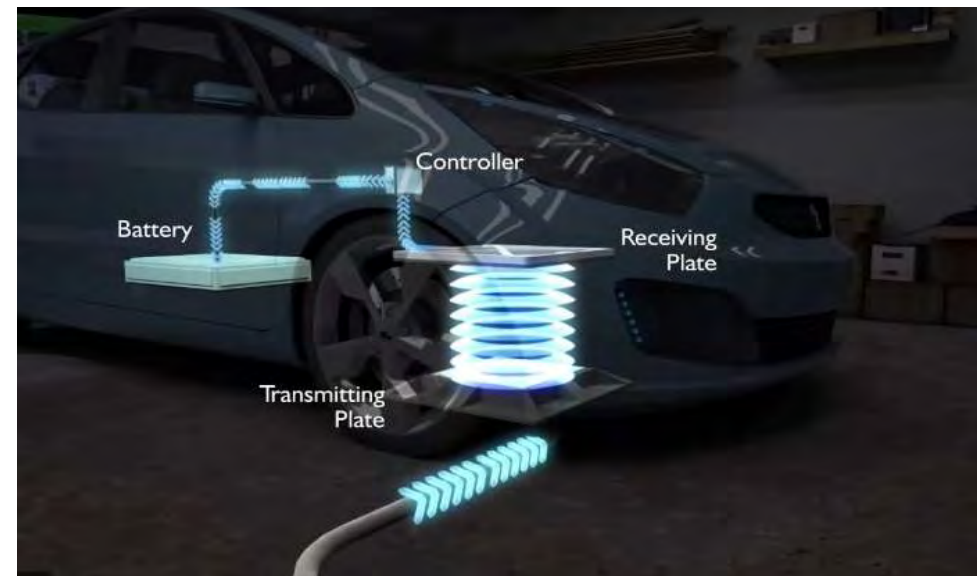
Wireless EV Charging

CoolPower® I/O

EazyPwr™



- Supports field termination
- Outdoor/water sealing technology up to IP69k
- Easy to replace cable
- Power + Signal configurations
- 20A – 100A and 40V – 480V
- Metal latching system ensures reliability



PwrBlade+[®] I/O



- Up to 60A/contact
- Squeeze-to-release latching, Slide-to-lock, or panel-mount termination configurations
- 12.6mm height above PCB
- 0.7mΩ end-of-life resistance

CoolPower[®] EV



- Up to 250A/pin
- AC/DC or signal pin options
- Multiple latching and panel-mount terminations available
- Blind-mate integrated guides
- 0.7mΩ end-of-life resistance

BarKlip[®] I/O



- Up to 200A/contact
- Mates directly to busbar
- 14 independent conducting beams
- Ultrasonically welded connection from wire to contact
- 0.2mΩ end-of-life resistance

Amphenol ICC

Thank you!

Contact us:

powersolutions@amphenol-icc.com

<https://www.amphenol-icc.com/powersolutions>