

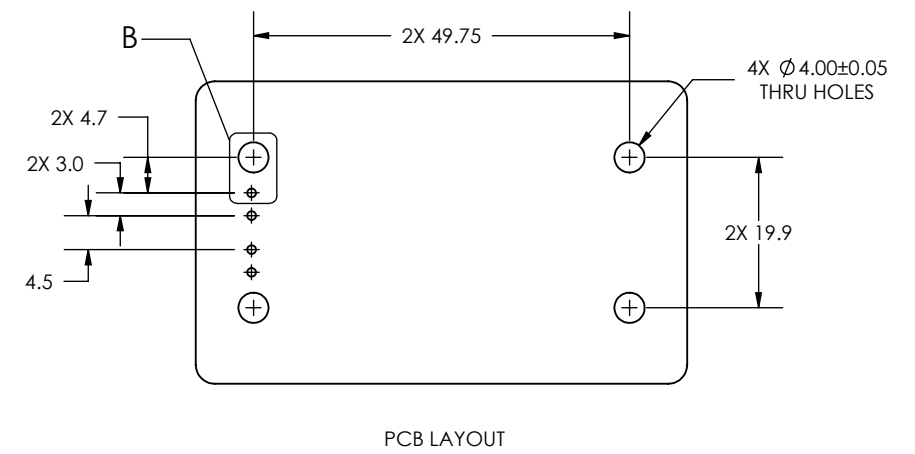
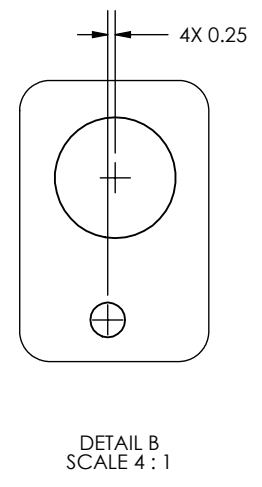
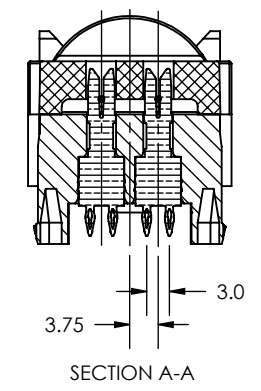
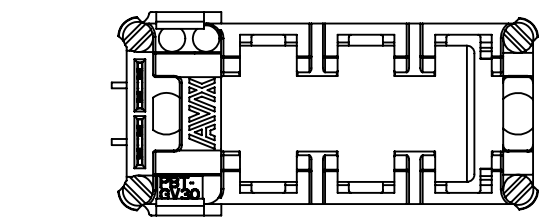
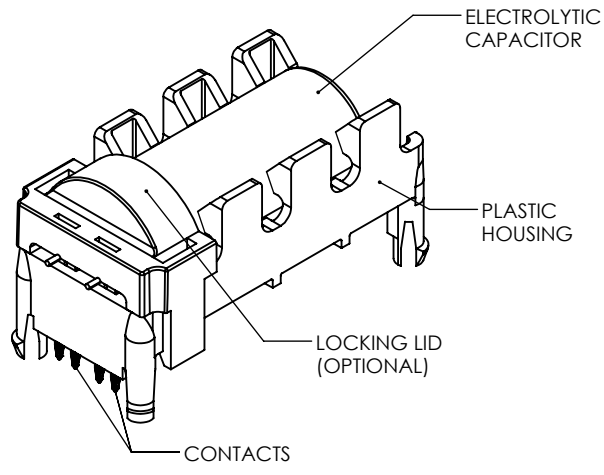
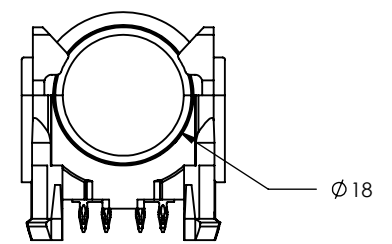
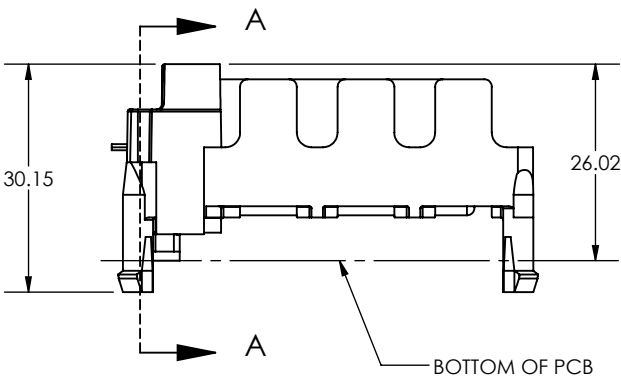
| DESIGN TABLE | |
|---------------------|---------------------|
| PART NUMBER | DESCRIPTION |
| 53-2900-002-100-100 | WITHOUT LOCKING LID |
| 53-2900-002-110-100 | WITH LOCKING LID |

| DRAWING NUMBER | | REV |
|----------------|-----------------------|-----|
| B | 53-2900-002-1XX-100-S | A |
| PART NUMBER | | |
| SEE TABLE | | |

PRELIMINARY RELEASE
2018-OCT-24

FOR REFERENCE ONLY

- NOTES:
1. ALL DIMENSIONS IN MILLIMETERS.
 2. HOUSING AND LID MATERIAL: 30% GLASS FILLED PBT.
 3. CONTACT MATERIAL: COPPER ALLOY.
 4. PLATING: TIN
 5. LOCKING LID IS OPTIONAL. ALL QUALIFICATION TESTING WAS DONE WITHOUT LID.



CONFIDENTIAL
THIS INFORMATION IS THE PROPRIETARY PROPERTY OF AVX CORPORATION AND IS DISCLOSED TO YOU, IN CONFIDENCE, ON CONDITION THAT NO FURTHER DISCLOSURE WILL BE MADE, BY YOU, TO ANYONE OTHER THAN AVX PERSONNEL WITHOUT WRITTEN AUTHORIZATION FROM AVX CORPORATION, FOUNTAIN INN, SC.

| | |
|-----------------|----------|
| REVISION NUMBER | ORIGINAL |
| Ⓐ | |

| CRITICAL | TOLERANCE UNLESS NOTED | |
|----------|------------------------|-----------|
| | DIMENSION | TOLERANCE |
| ▲ | .0 | ± |
| ▲ | .00 | ± |
| ▲ | .000 | ± |
| ▲ | ANGULAR | ± |

THESE DRAWINGS AND SPECIFICATIONS ARE THE PROPERTY OF AVX CORPORATION, AND SHALL NOT BE REPRODUCED, OR COPIED, OR USED FOR THE BASIS FOR THE MANUFACTURE OR SALE OF APPARATUS WITHOUT WRITTEN PERMISSION.

| AVX CAPACITOR CARRIER ASSEMBLY | | | |
|--------------------------------|-----------|---------|-------------|
| DRAWN | J. MINCEY | DATE | 2018-OCT-24 |
| CHECKED | | DATE | |
| APPROVED | | DATE | |
| | | SCALE | 1:1 |
| | | DRL NO. | 2600 |
| | | SHEET | 1 of 1 |

A KYOCERA GROUP COMPANY

 FOUNTAIN INN, SC 29644, USA

| DRAWING NUMBER | | REV |
|----------------|-----------------------|-----|
| B | 53-2900-002-1XX-100-S | A |