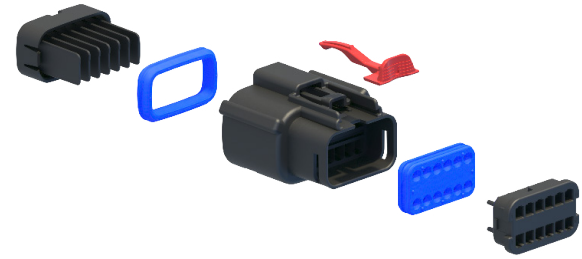


MX150 Hybrid Sealed Connector System >

Molex's MX150 Hybrid Sealed Connector System offers outstanding flexibility and space savings by integrating 1.50, 2.80 and 6.30mm terminals in to one package for a complete solution.



MX150 Sealed and Unsealed Connector System

FEATURES AND ADVANTAGES >

Hybrid Sealed Connectors



Circuit Sizes offered	8-way, 9-way, 10-way, 12-way, 16-way
Genders offered	Male, Female
Polarization options	Keys: A,B,C,D
Colors offered	Black, Light Gray, Dark Gray, Stone Gray
Industry interface	USCAR-2, USCAR-21 and GMW3191
Operating specifications	Current up to 22A, -40° to 150°C
Other features	Optional clip slot (11.00mm), TPA, CPA & Custom Void Patterns

Connector position assurance (CPA) option available

Helps to eliminate accidental disconnection between connectors

Preassembled terminal position assurance (TPA) housing

Helps ensure crimped terminal leads are properly locked into connector

Grommet cap

Protects mat seal and helps ensure proper alignment of the terminals

Four-key options available

Facilitate quick visual installation

Mat seal technology for MX150 (1.50mm) terminals

Helps eliminate the need for individual cable seals thereby reducing package size

One-piece 3.50mm-pitch housing

Offers a compact connector and helps eliminated cost assembly

MARKETS AND APPLICATIONS >

Automotive

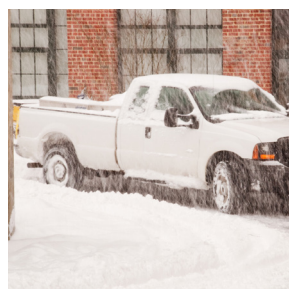
Automotive vehicles
Commercial vehicles
Industrial vehicles and equipment
Recreational vehicles

Commercial Vehicle

ATVs
Marine: under-dash wiring, lighting
Forklifts

Industrial Automation

Robotics
Industrial machines and motors



Automotive Vehicles



Robotics



ATVs

MX150 Hybrid Sealed Connector System

SPECIFICATIONS

12w Hybrid Connectors (Series 160111, 160112)

REFERENCE INFORMATION

Packaging: Housings—bulk pack

Mates With:

Receptacle Connectors, Series 160111
Blade Connectors, Series 160112

Use With:

MX150 Receptacle Terminals, Series 33012, 33001
MX150 Blade terminals, Series 33000, 33011
Sumitomo receptacle terminal part numbers,
8240-0423, 8240-0424
Sumitomo Blade Terminal PN's, 8230-5257,
8230-5258

Designed in: Millimeters

ELECTRICAL

Voltage (max.): 500V DC

Current (max.): 22.0A (for MX150 Terminals)

Contact Resistance (max.): 8 milliohms

Dielectric Withstanding Voltage (min.): 1000V AC

Isolation Resistance (min.): 100 Megohms

MECHANICAL/ELECTRICAL/SEALING

Durability: 8 milliohms max. at 10 cycles

Sealing: USCAR-2 Sealing Class 2

PHYSICAL

Housing: Nylon 40% glass filled

TPA: Nylon 40% glass filled

Wire Gauge:

MX150 Terminals ISO Wire: 0.35 to 1.50mm², SAE

Wire: 22 to 14 AWG

Sumitomo 2.80mm Terminals: 1.00 to 2.50mm²

Insulation Diameter: 2.69 to 1.20mm (0.106 to 0.047")

Operating Temperature: -40 to +125°C

10w Hybrid Receptacle Connectors (Series 160076)

REFERENCE INFORMATION

Packaging:

Housings—bulk pack

Use With:

μDPB Modules (series 200316); MX150 Receptacle
Terminals, Series 16077

Apex 6.30mm Receptacle Terminal PN: 33140138

Designed in: Millimeters

ELECTRICAL

Voltage (max.): 500V DC

Current (max.): 22.0A (for MX150 Terminals)

Contact Resistance (max.): 8 milliohms

Dielectric Withstanding Voltage (min.): 1000V AC

Isolation Resistance (min.): 100 Megohms

MECHANICAL/ELECTRICAL/SEALING

Durability: 8 milliohms max. at 10 cycles

Sealing: USCAR-2 Sealing Class 2

PHYSICAL

Housing: Nylon 40% glass filled

TPA: Nylon 40% glass filled

Wire Gauge: MX150 Terminals ISO Wire: 0.35 to 1.50mm², SAE

Wire: 22 to 14 AWG

Unsealed FCI Apex 2.80mm Terminals: 1.00 to 3.00mm²

Operating Temperature: -40 to +125°C

8w Hybrid Receptacle Connectors (Series 160078)

REFERENCE INFORMATION

Packaging:

Housings—bulk Pack

Use With: μDPB Modules (series 200316);

MX150 Receptacle Terminals, series 33012, 33001

Apex 6.30mm Receptacle Terminal PN: 33140138

Designed in: Millimeters

ELECTRICAL

Voltage (max.): 500V DC

Current (max.): 22.0A (for MX150 Terminals)

Contact Resistance (max.): 8 milliohms

Dielectric Withstanding Voltage (min.): 1000V AC

Isolation Resistance (min.): 100 Megohms

MECHANICAL/ELECTRICAL/SEALING

Durability: 8 milliohms max. at 10 cycles

Sealing: USCAR-2 Sealing Class 2

PHYSICAL

Housing: Nylon 40% glass filled

TPA: Nylon 40% glass filled

Wire Gauge: MX150 Terminals ISO

Wire: 0.35 to 1.50mm², SAE

Wire: 22 to 14 AWG

Unsealed FCI Apex 6.30mm Terminals: 6.00mm²

Operating Temperature: -40 to +125°C

www.molex.com/link/mx150.html