

L1NK Connector System Product Family

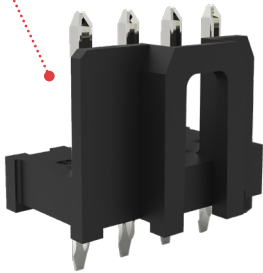


The L1NK Connector System is a wire-to-board system that delivers up to 11.0A of current through 2 pitch sizes (3.96mm and 2.50mm) and offers superior design options for flexibility and efficient assembly

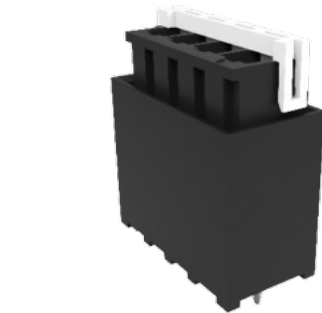
Features and Advantages



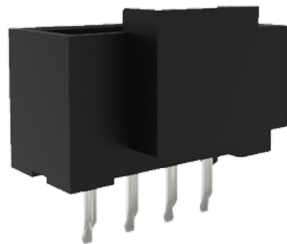
Reflow-capable header
Is able to withstand a 260°C reflow process



Reflow options available
Reduces labor costs, saving time and resources



L1NK 396 Connector



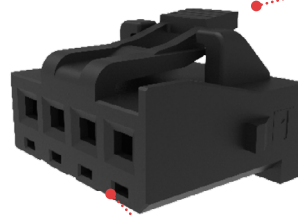
L1NK 250 Connector



Positive-locking latch
Offers a clear audible click for connection assurance



Unique keying design
Prevents mis-mating



Positive-locking latch
Offers a clear audible click for connection assurance

Unique keying design
Prevents mis-mating

TPA
Prevents terminal back-out

V-0/Glow Wire combination resin
Reduces the cost of materials and labor and allows customers to meet the European standard for electrical requirements



L1NK Connector System Product Family



Markets and Applications

Consumer – General Market

Washers and dryers
Freezers
Gaming machines
Printers
Refrigerators
Scanners
Security systems
Vending machines
White goods

Telecommunications/Networking

Routers and switches
Servers
Storage
Medical
Diagnostic equipment
Patient monitors

Automotive

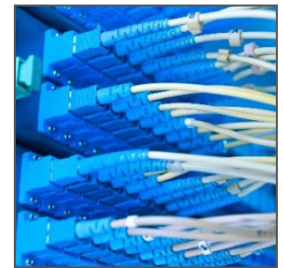
Harness manufacturers
Non-sealed applications
Inside devices
Charging stations

Industrial

Food and beverage
Assembly line equipment



Appliances



Routers

Specifications

L1NK 250 (2.50MM)

REFERENCE INFORMATION

Packaging: Bag, Tray, Reel
UL File No.: TBD
CSA File No.: TBD
Mates With: L1NK 250 components only
Header series: 207843
Receptacle series: 207841
TPA Series: 207845
Use with: L1NK 250 components only
Terminal Used: Series 46626
Designed In: Millimeters
RoHS: Yes
Series: 207843, 207841 and 207845
Halogen Free:
Receptacle: No

Header: Yes (Low Halogen)
Glow Wire Capable: Yes

PHYSICAL

Housing: V0/Glow Wire Combo
Contact: Tin
Plating: Tin
PCB Thickness: 1.60mm
Operating Temperature: -40 to +105°C

ELECTRICAL

Voltage (max.): 250V AC (RMS) or DC
Current (max.): 6.5A
Contact Resistance (max.): 10 milliohms
Dielectric Withstanding Voltage: 1500VAC
Insulation Resistance (min.): 1000 Megohms

MECHANICAL

Pitch: 2.50mm
Contact Insertion Force (max.): 15N (3.3 lbf)
Contact Retention to Housing (min.): 35.6N
Insertion Force to PCB: NA (Test not conducted)
Minimum Retention Force: 7.5N
Mating Force: 6N per circuit
Un-mating Force: 0.5N per circuit
Durability (max.): 25

L1NK 396 (3.96MM)

REFERENCE INFORMATION

Packaging: Bag, Tray, Reel
UL File No.: TBD
CSA File No.: TBD
Mates With: L1NK 396 components only
Header Series: 207478, 207479
Receptacle Series: 207458
TPA Series: 207459
Use With: L1NK 396 components only
Terminal Used: Series: 45570
Designed In: Millimeters
RoHS: Yes
Series: 207458, 207459, 207478 and 207479
Halogen Free: Yes
Compliant Series: 207478 and 207479

Not compliant: 207458 and 207459
Glow Wire Capable: Yes

PHYSICAL

Housing: V0/Glow Wire Combo
Contact: Tin
Plating: Tin
PCB Thickness: 1.60mm
Operating Temperature: -40 to +105°C

ELECTRICAL

Voltage (max.): 300V AC (RMS) or DC
Current (max.): 11.0A
Contact Resistance (max.): 10 milliohms
Dielectric Withstanding Voltage: 1700VAC
Insulation Resistance (min.): 1000 Megohms

MECHANICAL

Pitch: 3.96mm
Contact Insertion Force (max.): 14.7N (3.3 lbf)
Contact Retention to Housing (min.): 35.6N
Insertion Force to PCB: 13.7N (3.1 lbf)
Minimum retention force: 35.6N
Mating Force: 10.7N per circuit
Un-mating Force: 3.7N per circuit
Durability (max.): 25

www.molex.com/link/L1NK.html

Molex is a registered trademark of Molex, LLC in the United States of America and may be registered in other countries; all other trademarks listed herein belong to their respective owners.