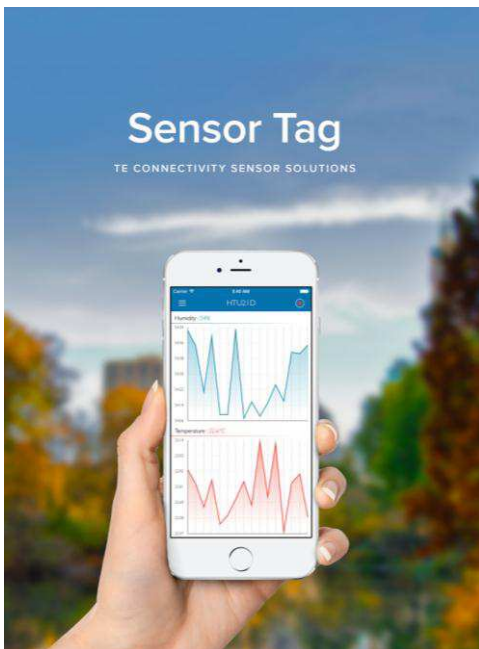


MEAS SENSOR TAG APP— INSTALLATION GUIDE FOR IOS



This document describes the installation of the Measurement Specialties sensor tag application for iOS.

Contents

| | | |
|-----|--------------------------------|---|
| 1 | Installation | 2 |
| 1.1 | Prerequisite | 2 |
| 1.2 | Download Application | 2 |
| 2 | MEAS Sensor Tag Software | 3 |
| 2.1 | Sensors measurement | 3 |
| 2.2 | Data logging | 6 |
| 3 | Settings | 8 |
| 4 | Applications | 8 |
| 4.1 | Comfort | 8 |
| 4.2 | Altimeter | 9 |

1 INSTALLATION

1.1 Prerequisite

- ✦ MEAS Sensor Tag
- ✦ iPhone 4S or newer / iOS 7.0+

1.2 Download Application

Open the App Store and look for “TE Connectivity Sensor Solutions” or “MEAS Sensor Tag”:

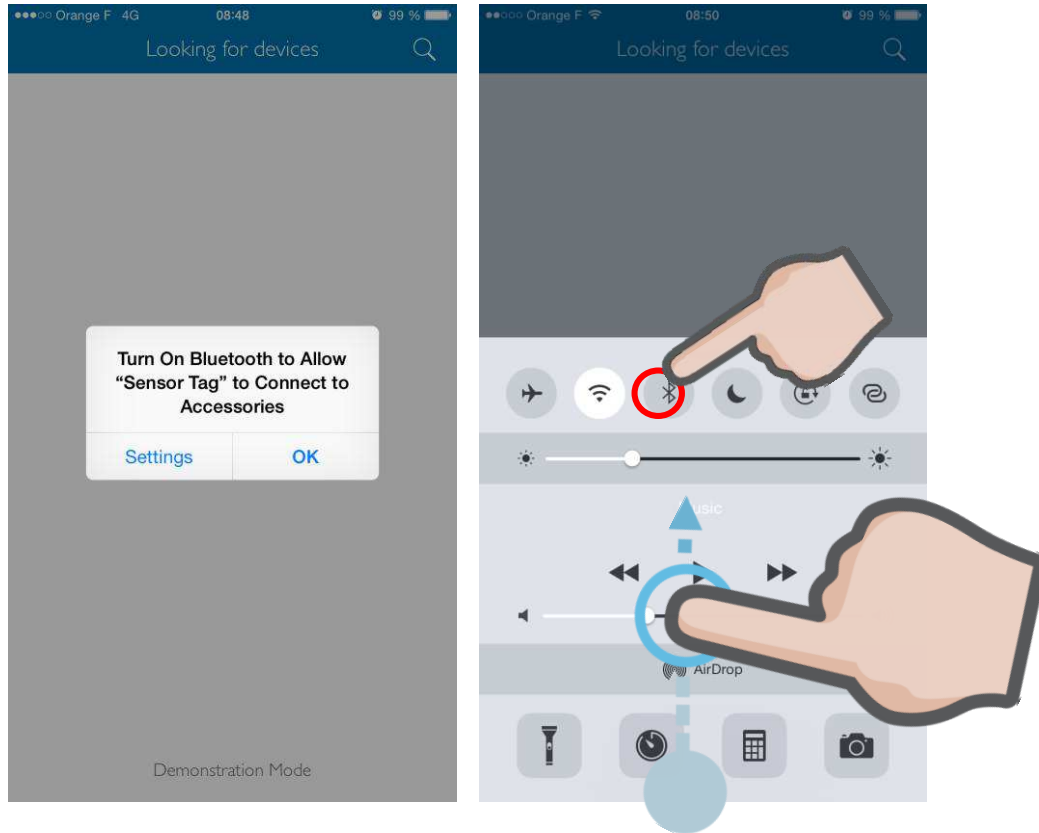


Just click the GET button to start installing the application.

2 MEAS SENSOR TAG SOFTWARE



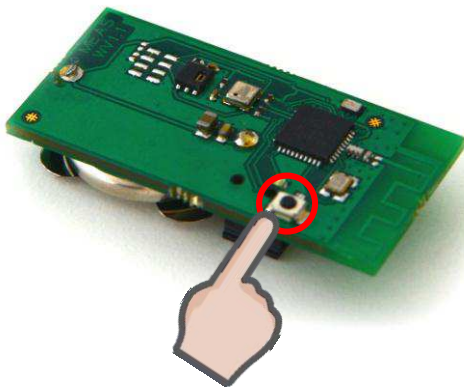
Look for the Sensor Tag icon on your smartphone and launch the application



At first launch, you will be asked to authorize the application to use the Bluetooth from your phone, just press OK. Then you will have to turn on the Bluetooth connection, to do so, open up the Control Center by sliding from bottom to top with your finger, then click on the Bluetooth icon.

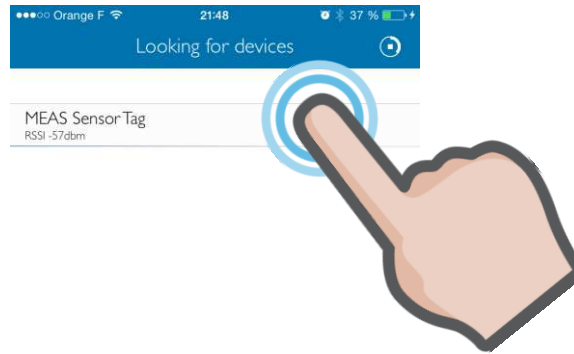
2.1 Sensors measurement

Press the push button located on the Sensor Tag board, the LED will blink in order to let you know that it is ready to accept a connection.

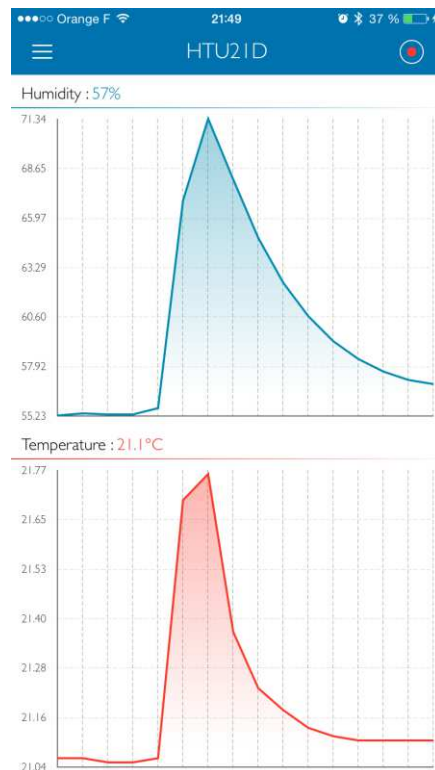


MEAS SENSOR TAG APP— INSTALLATION GUIDE FOR IOS

You can now select your device in the application discovery list.

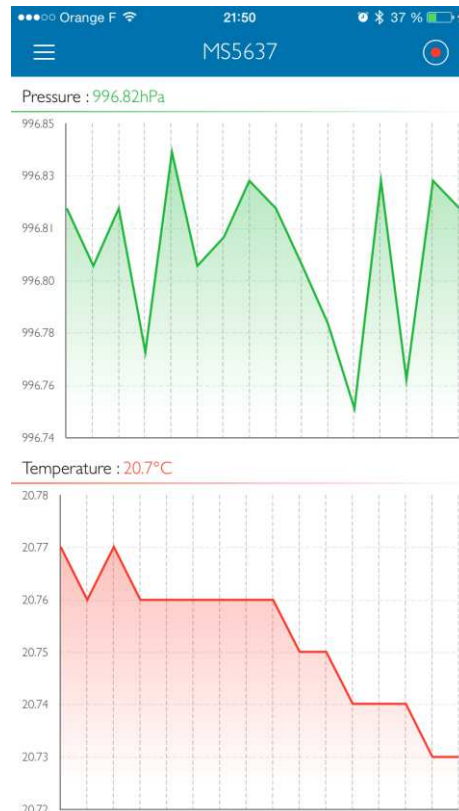


The MEAS Sensor Tag board will transmit one sample per second for each sensor and show sensor data on a scrolling graph.



MEAS SENSOR TAG APP— INSTALLATION GUIDE FOR IOS

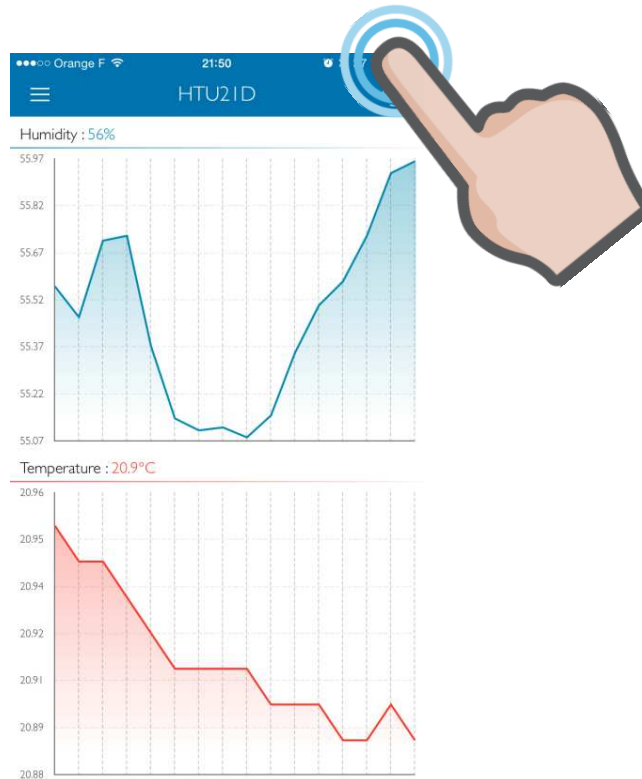
Use the navigation drawer in order to select other sensors when available.



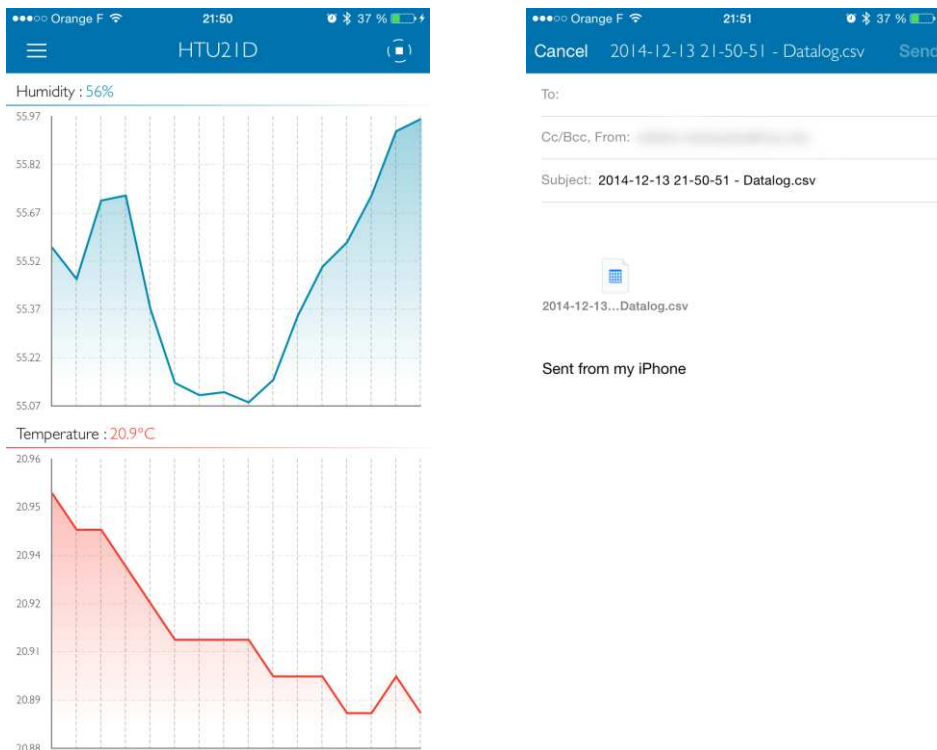
MEAS SENSOR TAG APP— INSTALLATION GUIDE FOR IOS

2.2 Data logging

In order to record your data, you can at any moment, press the record button.

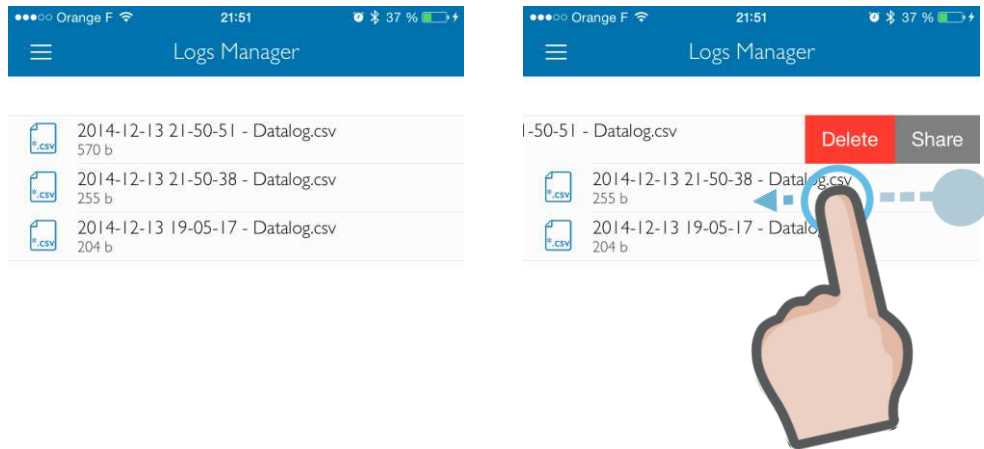


When you will stop your data logging, you will be asked to export it via email.



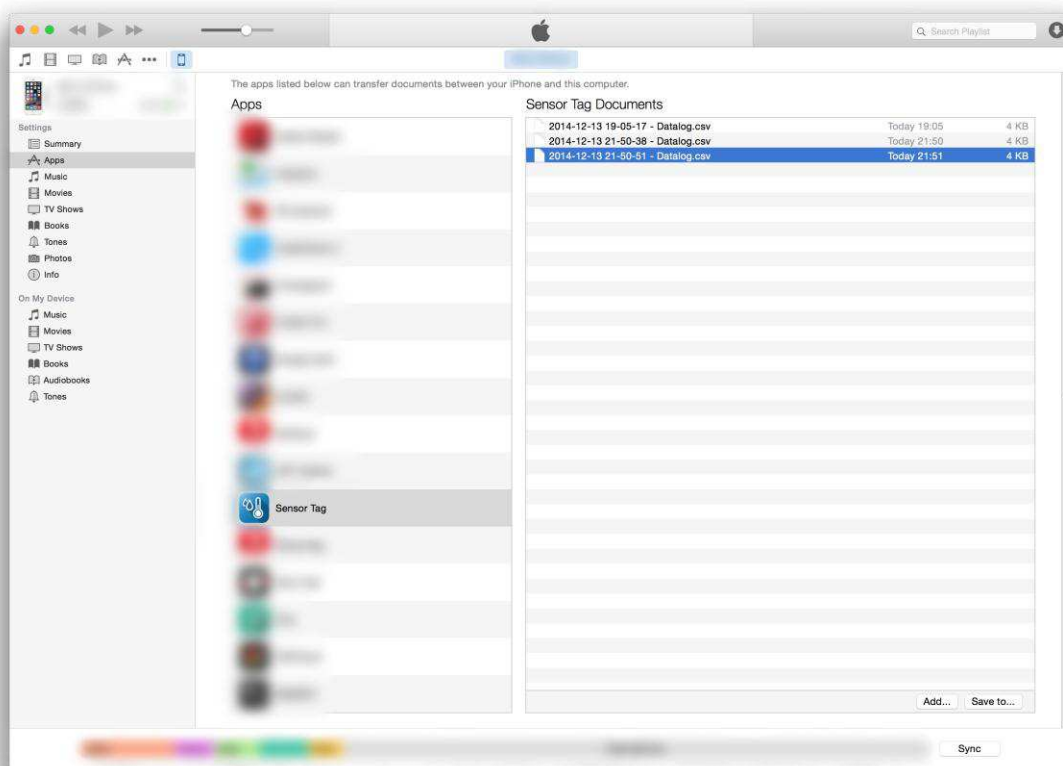
MEAS SENSOR TAG APP— INSTALLATION GUIDE FOR IOS

If you do not want or need to export it right away you can just can it. Your data log will always be available through the Logs Manager:



Just swipe the log of your choice from right to left in order you delete or share it.

You can also retrieve your data logs using iTunes® application, just connect your device to a USB port, navigate to your Apps tab in the iTunes® application then look for the Sensor Tag application. The list of your logs will appear in the Documents pane; select one then click the “Save to...” button to export it on your computer.



3 SETTINGS

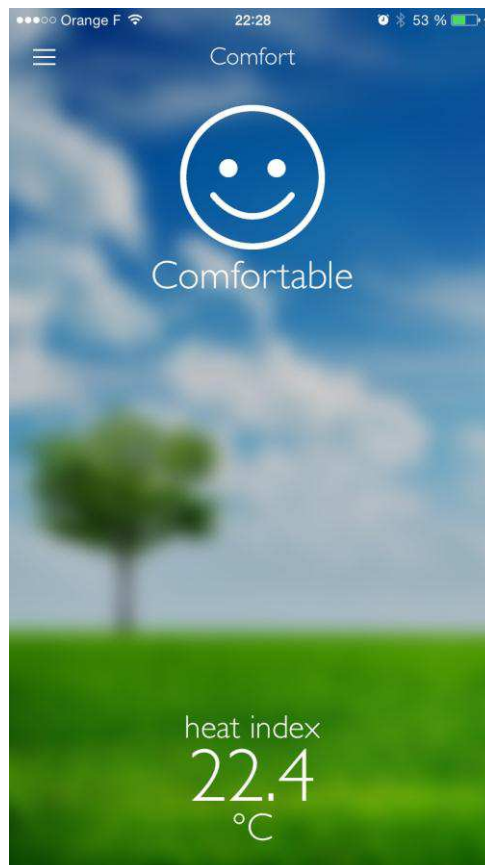


The settings tab of the navigation drawer will allow you to set the charts automatic zooming, the temperature or altitude unit of measurement or the sea level pressure for altitude measurement.

4 APPLICATIONS

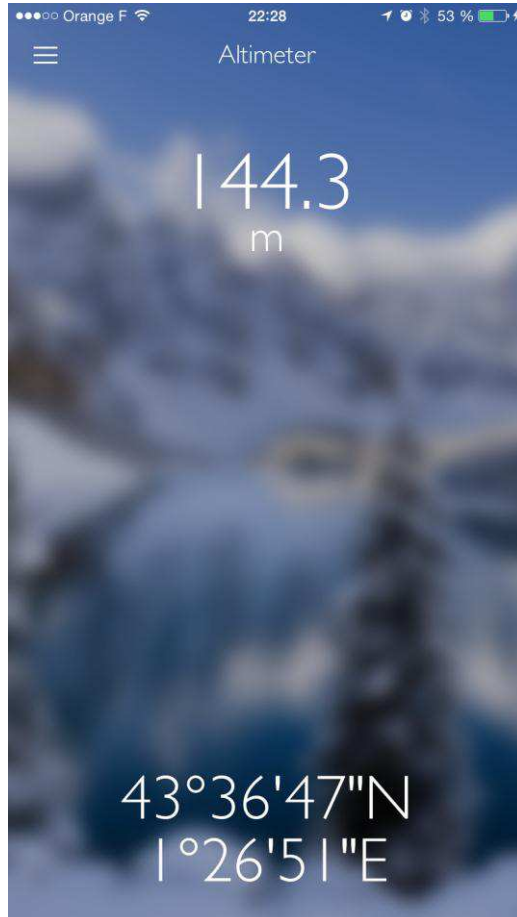
4.1 Comfort

This comfort tab demonstrates how the humidity and temperature can be used in order to compute the heat index.



4.2 Altimeter

This comfort tab demonstrates how the barometric pressure can be used to compute the altitude. In order to make this value accurate, the sea level pressure from your location has to be specified in the settings tab.



MEAS SENSOR TAG APP— INSTALLATION GUIDE FOR IOS

CONTACT

Measurement Specialties, Inc.,
a TE Connectivity company
Impasse Jeanne Benozzi - CS 83163
31027 Toulouse Cedex 3 France
+33 (0)5 820 822 00
customercare.tlse@te.com

te.com/sensorsolutions

IOS is a trademark
iTunes is a trademark of Apple Inc.
Bluetooth is a trademark of Bluetooth SIG, Inc.

Measurement Specialties, MEAS, TE Connectivity, TE Connectivity (logo) are trademarks. The information given herein, including drawings, illustrations and schematics which are intended for illustration purposes only, is believed to be reliable. However, TE Connectivity makes no warranties as to its accuracy or completeness and disclaims any liability in connection with its use. TE Connectivity's obligations shall only be as set forth in TE Connectivity's Standard Terms and Conditions of Sale for this product and in no case will TE Connectivity be liable for any incidental, indirect or consequential damages arising out of the sale, resale, use or misuse of the product. Users of TE Connectivity products should make their own evaluation to determine the suitability of each such product for the specific application.

© 2016 TE Connectivity Ltd. family of companies All Rights Reserved.

Document No: WPC005 | Issue Index: 0 | Volume: 01