

Connectors for Drug Infusion Pumps



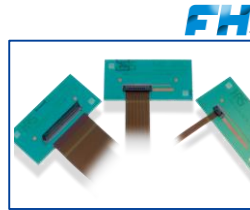
Internal Signal

FPC/FFC Connector



FH34

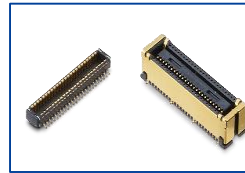
Top Contact
Back Flip
Pitch : 0.5mm
Height: 1.0mm
No. of Pos.: 4-50
Rated Current: 0.5A



FH52/FH52E

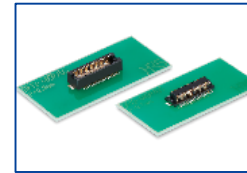
Bottom Contact
Front Flip
Pitch: 0.5/1.0mm
Height: 2.0mm
No. of Pos.: 4-80
Rated Current: 0.5A

FPC-to-Board Connector



DF40G

Shielded Design
Pitch: 0.4mm
Stacking Height:
1.5-3.5mm
No. of Pos.: 10-70
Rated Current: 0.35A



DF12N

Pitch: 0.5mm
Stacking Height:
3.0-5.0mm
No. of Pos.: 10-80
Rated Current: 0.3A

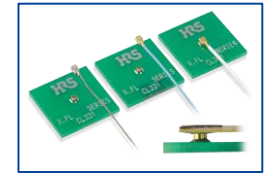
For Wi-Fi Module

Small RF Connector



U.FL

Mated Height:
1.9mm (2.5mm Max.)
Applicable Cable:
ø0.81/0.95/1.13/
1.32/1.37mm



X.FL

Mated Height:
0.94mm (1.0mm Max.)
/1.2mm (1.3mm Max.)
Applicable Cable:
ø0.5/0.64
/0.81/1.13mm

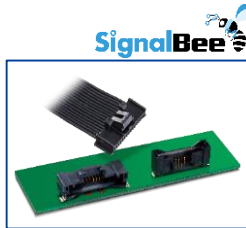
Signal/Power

Wire-to-Board Connector



DF50

Double-row, Small
Positive Lock
Rated Current: 1A Max.
Pitch: 1.0mm
No. of Pos.:
20~50 (Double Row)
Applicable Cable:
26~32 AWG



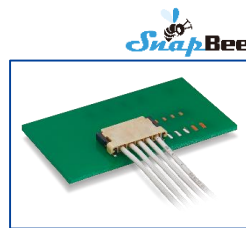
DF50A

Single-row, Small
Positive Lock
Rated Current: 1A Max.
Pitch: 1.0mm
No. of Pos.:
2~16 (Single Row)
Applicable Cable:
26~32 AWG



DF62

Slim Design for
Small Spaces
Positive Lock
Rated Current: 4 Max.
Pitch: 2.0mm×2.2mm
No. of Pos.: 2~24
Applicable Cable:
22~30 AWG



DF65

Mated Height: 1.8mm
Super Low Profile
Snap Lock Design
Rated Current: 4.0 Max.
Pitch: 1.7mm
No. of Pos.: 3~7
Applicable Cable:
24~28 AWG



DF33C

Robust
Positive Lock
Rated Current: 5A Max.
Pitch: 3.3mm
No. of Pos.:
2~6 (Single Row)
4~12 (Double Row)
Applicable Cable:
20, 22 AWG

Interface

Waterproof Circular Connector



HR30

IP67, IP68
Small Plastic Connector
Rated Current:
5A (3pos.)
2A(6, 10, 1 2pos.)
Outer Dia.: ø15.5mm Max.
No. of Pos.: 3, 6, 10, 12
Applicable Cable:
26~30 AWG



LF

IP67, IP68
Small Shielded Connector
Rated Current: 10A Max.
No. of Pos.: 3~20
Applicable Cable:
16~26 AWG