



## APPLICATION TOOLING PRODUCT LINE CARD

A Complete Line of Quality Tooling Solutions

# PORTABLE WIRE PROCESSING

## Standard Die Envelope (SDE)

We've combined all the features pioneered in our original PRO-CRIMPER hand tools with the versatility of an even more robust design to create the revolutionary SDE Crimp commercial tool system. SDE Crimp minimizes the need for multiple types of hand tools thanks to its Standard Die Envelope (SDE) die sets, which are easily interchangeable from manual to power-assisted tools depending on your needs. An enhanced tool frame also delivers greater operator comfort, efficiency, and crimping quality. Available as a fully assembled tool, or with the frame (PN 2362810-1) and die set sold separately, SDE Crimp brings a new level of flexibility and performance to your crimping.

**32 - 10 AWG (.03 mm<sup>2</sup> - 5 mm<sup>2</sup>)**



## CERTI-CRIMP

The CERTI-CRIMP family consists of reliable, repeatable and certified crimp tooling to handle a variety of industry-mandated specifications. CERTI-CRIMP tools are available in both manual and battery-powered formats.

**32 - 10 AWG (.03 mm<sup>2</sup> - 5 mm<sup>2</sup>)**



## Hydraulic Crimp

Our line of quality hydraulic tooling includes industry-standard HYP8 & HYP10 tool systems. The basic hydraulic tool system requires a pump, hose (multiple lengths are available with all configurations), crimp head, and shank or U-dies.

**8 AWG - 1000 MCM (8 mm - 506 mm<sup>2</sup>)**



### Manual Power

- Adjustable ratchet control system
- Ergonomic designs
- Certified and non-certified options available
- Recommended for less than 60 crimps/hour



### Pneumatic Power

- Lightweight design
- Hand or foot operated
- Rotating heads
- Recommended for less than 90 crimps/hour



### Battery Power

- Short charge times
- 3,400 - 24,000 lbs of crimp force
- Recommended for less than 90 crimps/hour



### Hydraulic Power

- Shank and U-dies
- 8,200 (HYP8) and 10,000 (HYP10) lbs of crimp force
- Requires a pump, hose and foot or hand control to operate



### Insulation Displacement

- Interchangeable heads
- One-at-a-time and mass termination options available
- Available in manual and benchtop configurations



### Specialized Tooling

- Customizable kits
- Terminal strip cutter
- 4-way indent tools

# APPLICATORS AND SPARE TOOLING



## OCEAN 2.0

- Mechanical and pneumatic feed
- 26 - 7 AWG (.13 - 10 mm<sup>2</sup>)
- Atlantic and Pacific style ram configurations
- Excellent repeatability
- 30 and 40 mm stroke



## Spare Tooling

- Precision ground, chrome plated
- Engineered for compliance to meet OEM specifications
- UL listed
- CSA certified



## Splice

- 20 - 3 AWG (.5 - 25 mm<sup>2</sup>)
- 40 mm stroke
- Shut height: 135.78
- Fine adjustment
- For both pig-tail and thru-splice applications



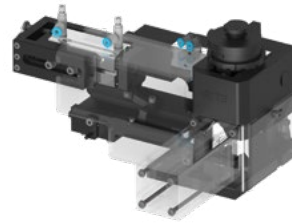
## Mini Loose Piece

- 26 - 7 AWG (.14 - 10 mm<sup>2</sup>)
- 40 mm stroke
- Shut height: 135.78 mm
- Fine adjustment
- Ready for ferrule crimps for data connectivity



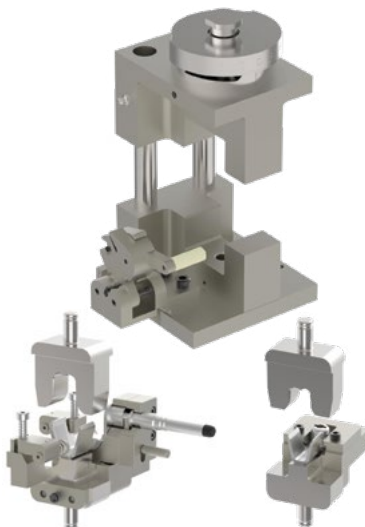
## Mid Size Wire

- 7 - 3 AWG (10 - 25 mm<sup>2</sup>)
- 40 mm stroke
- Shut height: 135.78 mm
- Fine adjustment
- Fits on presses that accept traditional applicators
- Strip and loose piece terminal loading



## Large Wire

- 3 - 0 AWG (25 - 50 mm<sup>2</sup>)
- Fine adjustment
- 40 mm stroke
- Shut height: 154.78 mm
- Strip and loose piece terminal loading



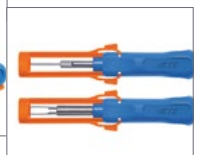
## High Voltage

- Highly configurable design allows for left, front and side feed operation
- 5 - 4Ø AWG (16 - 120 mm<sup>2</sup>)
- Fine adjustment
- Multiple platforms available to accommodate TE and non-TE presses
- Excellent repeatability

## Insertion/Extraction Tools



- Making terminal extractions as easy as 1, 2, 3.



# SEMI-AUTOMATED WIRE PROCESSING



## HV-CP

- Multi-step stripping of multi-layered conductors in as fast as 30 seconds
- Self calibrating
- Processes 10 - 120 mm<sup>2</sup> cable
- Stores up to 1,500 unique profiles
- CE approved



## 3K/5K

- Capable of 3,000 or 5,000 lbs of crimp force
- Priced competitively
- 30 and 40 mm stroke
- Available with and without crimp quality monitor (CQM II)
- Defective crimp cut and stripping module versions available
- CE approved on select models
- New 5T Terminator will replace this model by the end of 2024



## HV-20V Vision

- New Die Vision System analyzes die set, terminal, and cable conditions before the footswitch is pressed
- With a low risk of scrapping parts comes a lower cost risk
- CE approved



## GII

- Capable of 5,000 lbs of crimp force
- Improved interior lighting compared to 3K/5K platform
- 40 mm stroke only
- Available with and without CQM II
- Quieter than 3K/5K models
- Recommended for customers who have tape-fed applications
- Split cycle is standard
- Defective crimp cut and stripping module versions available
- CE approved
- New 5T Terminator will replace this model, coming soon in 2025



## HV-20T

- Capable of 40,000 lbs of crimp force
- 44 mm stroke only
- Includes CQM II
- Capable of processing wires up to 120 mm<sup>2</sup>
- CE approved



## HF-20T

- Capable of 40,000 lbs of crimp force
- Capable of processing wires up to 120 mm<sup>2</sup>
- CE approved



## SRC-M OCTACRIMP (Machine)

- Capable of 1350-135 crimp force
- Provides segmented radial crimp (SRC) technology for large wire crimping needs
- CE approved



# HEAT SHRINK MACHINES



## RBK-X1

- Tubing diameter up to 19 mm
- Tubing length up to 70 mm long
- Stores hundreds of unique profiles
- Compatible with upstream ultrasonic welder
- CE approved on select models



## RBK-X1C

- 60 mm long x 19 mmØ
- In-line products
- Steady product during process
- Compatible with ultrasonic welder communication
- 2376800-1, Standard
- 1-2376800-4, Air-cooled, CE



## XS-D1

- Lightweight, portable hot air tool
- 240 mm long x 70 mmØ
- Two working positions
- CE approved



## Model 105

- Tubing diameter up to 76.2 mm
- Tubing length unlimited
- Stores hundreds of unique profiles
- Compatible with upstream ultrasonic welder
- CE approved on select models



## XB 17

- Fast determination of sealing integrity
- Multiple test fixtures
- 100 mm long x 19 mmØ
- Centering module available
- CE approved on select models



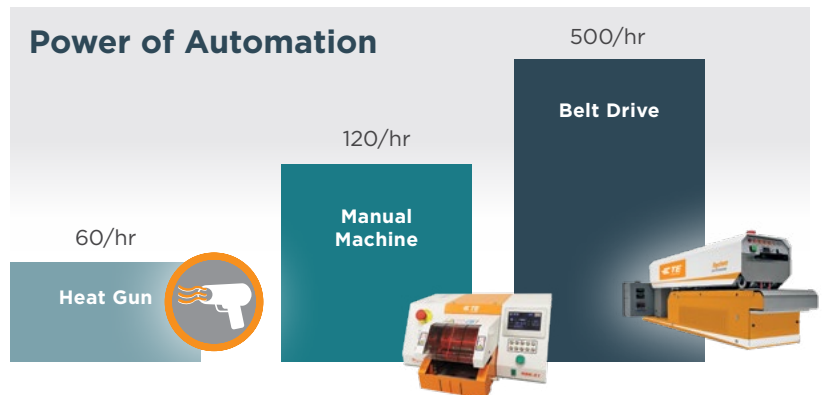
## XB 19

- 100 mm long x 25 mmØ
- 160 mm long x 25 mmØ
- Centering module available
- Centering module available
- CE approved



## AD-3050

- Fast determination of sealing integrity
- Multiple test fixtures
- CE approved on select models



# HEAT SHRINK HAND TOOLS



## Raychem IR-550/ED-7

- Kit is used to install SolderSleeve and MiniSeal devices, SolderTacts contacts, and TE heat-shrinkable products
- IR-550/ED-7-KIT: 220 V, 50 Hz, 7.3 A
- ED-7-001-550 Controller: 220 V, 50 Hz, 2.8 A
- CE approved



## Raychem Mini-Ray MK5

- Tool is designed for installing SolderSleeve termination products up to 9 mm
- The hand tool is fan cooled and has low heat emission, as the lamp is only energized on demand
- CE approved



## Raychem IR-550

- The Raychem IR-550 heating tool from TE is a portable electric infrared heating tool
- Input Power 120 V, 50-60 Hz, 4.5 A
- Models: IR-550-50 / IR-550-300
- CE approved



## Raychem CV2014 Series

- CV2014 Series ThermoGun Heating Tool is used for installing TE heat-shrink tubing and SolderSleeve terminations, and for making cable repairs
- Voltage: 120 V (US models) or 230 V (UK/EU models)
- CE approved



## Raychem ThermoGun Heating Tools

- CV1981 and CV1983 Series ThermoGun Heating Tools
- Ergonomic handling
- The tools use an internal thermocouple to ensure accurate output temperature
- Power consumption 1600 W
- CE approved



## Raychem AA-400

- AA-400 Super Heater Compressed-Air Heating Tool is used for installing heat-shrinkable tubing and devices
- Power 120 V, 240 V
- CE approved



## Raychem Heat Guns

- The tools are designed for installation of TE heat-shrink products and SolderSleeve devices
- Power 120 V, 230 V
- Models: HL1920E / HL2020E
- CE approved

# MAGNET WIRE EQUIPMENT

MAG-MATE

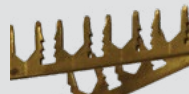
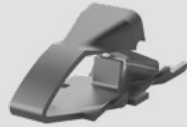
Mini MAG-MATE

SIAMESE

Leadlok

AMPLIVAR

Power Splice



## Arbor Press

- Ideal for repair, service and prototype work



## Inverted AMPLIVAR

- AMPLIVAR, pigtail and thru-splice termination for magnet wire and lead wire combinations



## Power Splice

- Reliable pigtail splice termination of magnet wire and solid or stranded lead wires



## Workstation

- Standardized and customized work stations to meet customer demands
- Designed to automatically insert terminals into cavities of coil bodies
- CE approved



## MK I and II

- For MAG-MATE, SIAMESE and Leadlok terminal applications
- Single, dual, triple and quadruple insertion capabilities
- Optional insertion force monitoring
- Insertion module with or without electrical cabinet and touch panel options available
- CE approved



## APT-5A and 5E

- Fast, efficient system for AMPLIVAR applications with no need to strip magnet wire insulation
- Auto crimp height adjustment and CQM models available
- Infinite splice models available
- Connects up to 3 wires in 1 splice
- CE approved



## Thru-Splice

- Includes fine crimp height adjustment
- Full guarding with interlocks
- Total and batch counters
- Jog and split cycle operation
- CE approved

# BOARD PROCESSING EQUIPMENT



TE Connectivity offers a wide range of discrete pin insertion and servo driven connector seating machines that mass terminate compliant pin connectors. So there's one that is perfectly suited for your product needs. And each model leverages the simple, field-proven, solder-free manufacturing offered by the entire TE product line.

## Pin Insertion Machines (All pin insertion machines are CE approved and have a PCB and carrier capacity of 420 x 360 mm)



### P100

- Manual to fully auto designs
- PCB and connector stitching applications
- Repeatability:  $\pm 0.02$  mm
- Bi-directional mode for carrier and PCB handling
- Insertion rate: 1.5 cycles/sec at 10 mm pitch
- Capable of double insertion mode



### P300

- Manual to fully auto designs
- PCB applications
- Repeatability:  $\pm 0.02$  mm
- Insertion rate: 3 cycles/sec at 10 mm pitch
- Capable of triple insertion mode



### P360

- Fully auto designs
- PCB and connector stitching applications
- Repeatability:  $\pm 0.01$  mm
- Insertion rate: 5 cycles/sec at 25 mm pitch
- Capable of triple insertion mode
- Bi-directional mode for carrier and PCB handling



### P550

- Fully auto design
- PCB and connector stitching applications
- Repeatability:  $\pm 0.01$  mm
- Insertion rate up to 5 cycles/sec at 25 mm pitch
- Capable of triple insertion mode
- Bi-directional mode for carrier and PCB handling



### C360

- Fully automated loose piece press for forces up to 5kN
- For connectors and various other applications
- Repeatability:  $\pm 0.01$  mm
- Insertion Rate: 1 insertion/second
- Bi-directional mode for carrier and PCB handling

## Connector Seating Machines



### CBP-5T MK II

- Servo electric press
- PCB capacity of 460 x 610 mm
- 44 kN press force
- CE approved



### CSP MK II

- Shuttle system for product location under press ram
- Housing capacity of 75 x 150 mm
- Manual and pneumatic options
- CE approved



### CMP-5T MK II

- 53 kN press force
- Board capacity of 610 x 915 mm
- Wide range of insertion heads available
- CE approved



### CMP-10T MK II

- 107 kN press force
- Board capacity of 610 x 915 mm
- Wide range of insertion heads available
- CE approved



### AP 3T/5T

- 44 kN press force
- Camera installed in press head for recording PCB SN
- CE approved



---

# FLEXIBLE FLAT CABLE AND RIBBON CABLE EQUIPMENT



## MARK II

- 15 kN crimp force
- 40 mm [1.56 in] press stroke
- Semi-automatic entry level machine
- Single crimp but fast crimping cycle: 3 contacts/sec
- High flexibility: applicators available for all FFC contacts



## MARK IV

- Semi-automatic machine
- Easy to use
- Cycles per hour: 120-140
- 25 kN crimp force
- Vision system for part detection or cable color



## FLEXIBLE PRINTED CIRCUIT CABLE (FPC) 300

- Semi-automatic machine
- Nominal crimp speed: 3 stroke/sec
- Designed in order to be in compliance with automotive quality requirement
- Single crimp but fast cycle: 3 contacts/sec
- CE approved

---

## TE Connectivity Technical Support Center

USA:  
1.800.522.6752

S. America  
+54.11.3404.6261

France:  
+33.1.34.20.8686

Canada:  
1.800.522.6752

Germany:  
+49.6151.607.1999

Netherlands:  
+31.73.624.6999

Mexico:  
+52.55.11.06.0800

UK:  
+44.0800.267666

China:  
+86.400.820.6015

## TE Application Tooling Field Services

### Your Resource for Expert Technical Support

TE Application Tooling is supported by a responsive organization of service engineers located conveniently across the globe to provide timely response to customer needs.

In addition to installation, warranty and repair service, TE Field Engineers can help with selection of the most appropriate equipment for your requirements: training of maintenance and operation personnel, troubleshooting assistance; and spare parts. Service contracts to cover all your application equipment are also available.

## Connect With Us

Learn more about our comprehensive line of tooling solutions at [tooling.te.com](https://www.tooling.te.com).

---

### te.com

OCEAN, AMP, AMP 3/K-40, AMP 5K/40, TE Connectivity, TE Connectivity (logo) and Every Connection Counts are trademarks. All other logos, products and/or company names referred to herein might be trademarks of their respective owners.

The information given herein, including drawings, illustrations and schematics which are intended for illustration purposes only, is believed to be reliable. However, TE Connectivity makes no warranties as to its accuracy or completeness and disclaims any liability in connection with its use. TE Connectivity's obligations shall only be as set forth in TE Connectivity's Standard Terms and Conditions of Sale for this product and in no case will TE Connectivity be liable for any incidental, indirect or consequential damages arising out of the sale, resale, use or misuse of the product. Users of TE Connectivity products should make their own evaluation to determine the suitability of each such product for the specific application.

©2024 TE Connectivity. All Rights Reserved.

1-1773864-6 04/24

### APPLICATION TOOLING PRODUCT LINE CARD

TE Connectivity  
Global Application Tooling Division

Americas: 1-800-722-1111  
EMEA: 49-6151-607-1518  
APAC: 86-021-3325-9030

Tooling Portfolio: [tooling.te.com](https://www.tooling.te.com)  
Field Service: [te.com/fieldservice](https://www.te.com/fieldservice)