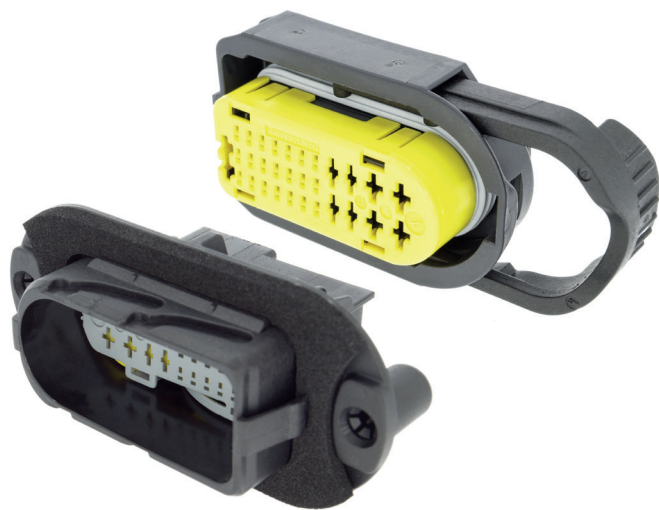


SICMA PANEL THROUGH UNSEALED SERIES



SICMA Panel Through Unsealed Series 29 Way

SICMA FAMILY BENEFITS

- Compact size for a panel mount solution and electrical link passing through a wall
- Retractable protecting grid for male terminals to avoid pin bending

PANEL THROUGH UNSEALED SERIES FEATURES

- Pass through bulk head type, mounted on a metal panel sheet
- Providing a convenient door-to-body or a reliable cockpit-to-engine solution



AVAILABLE CONFIGURATIONS

Cavity Count (ways)	24, 29, 42
Cavity Configurations	0.64 mm, 1.5 mm & 2.8 mm
Material	PBT
Genders	Female & Male



APPLICATIONS

Door-to-body connection
Firewall between cockpit and engine interconnection
Bulkhead for battery control in HV/EHV



TEMPERATURE



VIBRATION



CONNECTOR MATING FORCE



See back page for representative part numbers and packaging dimensions.

About Aptiv

Aptiv is a global technology company that develops safer, greener and more connected solutions enabling the future of mobility. Headquartered in Dublin, Aptiv has approximately 150,000 employees and operates 14 technical centers, as well as manufacturing sites and customer support centers in 45 countries.

Visit aptiv.com



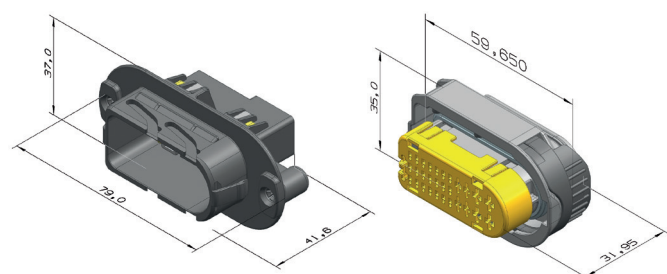
Cavity count	Blade size (mm)	Gender	Dimensions L x W x H (mm)	Part number	Color	Indexes offered
24	0.64(12) / 1.5(8) / 2.8(4)	F	35.00 x 59.65 x 31.95	33500458	Black	1
		M	37.00 x 79.00 x 41.60	33500459		
29	0.64(21) / 1.5(4) / 2.8(4)	F	35.00 x 59.65 x 31.95	10819390	Black	1
		M	37.00 x 79.00 x 41.60	10811880		
42	1.5(34) / 2.8(8)	F	44.20 x 63.50 x 29.20	10811874	Black	1
		M	47.00 x 83.50 x 42.70	10811875		

Cover

24 & 29	NA	NA	59.65 x 25.00 x 21.20	33508013	Black	NA
---------	----	----	-----------------------	----------	-------	----



DIMENSION MEASUREMENT SAMPLE

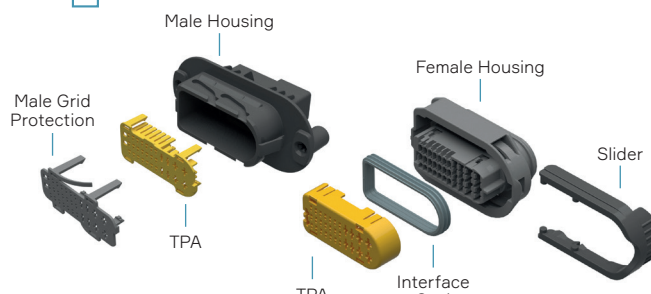


10811880

10819390



EXPLODED VIEW



10811880

10819390



COMPATIBLE WITH



Part numbers, specifications, dimensions and performance data in this document are for general references only and are subject to change without notice. To verify product information, please contact an Aptiv representative.