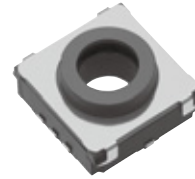


### 10 mm Square Center Space Long Travel SMD Light Touch Switches

Type: **EVPAD**



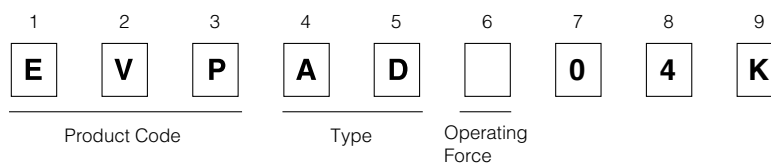
#### ■ Features

- The open center space allows for flexibility in choosing a LED  
Up to a 4.2-mm diameter chip LED can be mounted.
- Provides an excellent operational feel.
  - Crisp tactile feedback
  - Long stroke (1 mm)
- Supports auto reflow soldering.

#### ■ Recommended Applications

- Operating switches for car electronic equipment (car audio systems, car air conditioners, etc.)

#### ■ Explanation of Part Numbers



#### ■ Specifications

Type		Snap action/Push-on type SPST
Electrical	Rating	10 $\mu$ A 2 V DC to 50 mA 12 V DC (Resistive load)
	Contact Resistance	100 m $\Omega$ max.
	Insulation Resistance	100 M $\Omega$ min. (at 100 V DC)
	Dielectric Withstanding Voltage	250 V AC for 1 minute
	Bouncing	10 ms max. (ON, OFF)
Mechanical	Operating Force	4.0 N $\pm$ 0.8 N
	Travel	1.0 mm $\pm$ 0.15 mm
Endurance	Operating Life	100,000 cycles min.
Operating Temperature		-40 °C to +85 °C
Storage Temperature		-40 °C to +85 °C (Bulk) -20 °C to +60 °C (Taping)
Minimum Quantity/Packing Unit		1,000 pcs. Embossed Taping (Reel Pack)
Quantity/Carton		5,000 pcs.

Design and specifications are each subject to change without notice. Ask factory for the current technical specifications before purchase and/or use.  
Should a safety concern arise regarding this product, please be sure to contact us immediately.

## ■ Dimensions in mm (not to scale)

**EVPADK04K** General dimension tolerance :  $\pm 0.2$   
( ) dimensions are reference dimensions.

(Embossed Taping)

LED implementation position

LED implementation area

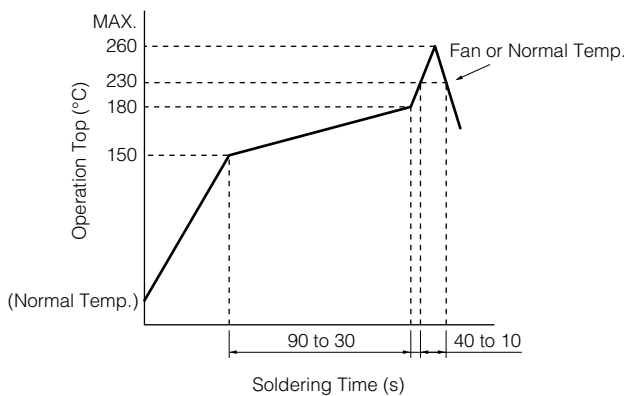
Circuit Diagram

PWB land pattern for reference

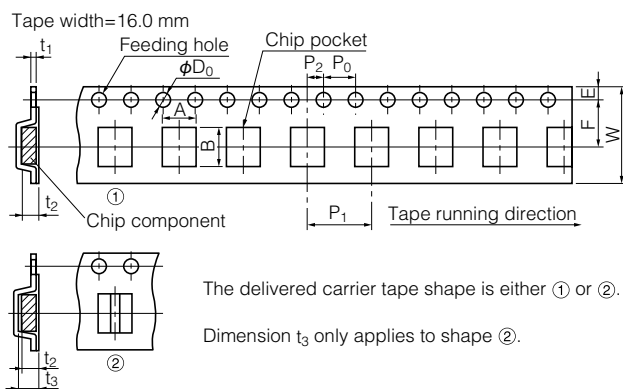
(Precautions for pattern design)

- \* Note that the terminals are exposed at the sections shaded with " "
- \* Establish electrical connection at A1, A2, A3, and A4 to improve the contact performance.

## ■ Recommended Reflow Soldering Conditions



## ● Embossed Carrier Taping



Taping condition : Lack of products in the middle of taping should be one MAX, but total quantity specified in the specifications should be secured.

Peeling off strength of top tape : It should be within 0.2N to 1.0N at 165 degree in peeling off angle.

Joint of carrier tape : One joint per one reel may exist.

Unit: mm

Part No.	Height	A	B	W	F	E	P <sub>1</sub>	P <sub>2</sub>	P <sub>0</sub>	D <sub>0</sub> Dia	t <sub>1</sub>	t <sub>2</sub>	t <sub>3</sub>
EVPAD	4.6	10.7 $\pm$ 0.2	10.7 $\pm$ 0.2	16.0 $\pm$ 0.3	7.5 $\pm$ 0.1	1.75 $\pm$ 0.10	12.0 $\pm$ 0.1	2.0 $\pm$ 0.1	4.0 $\pm$ 0.1	1.5 $^{0.1}_0$	0.40 $\pm$ 0.05	4.8 $\pm$ 0.2	5.8 $\pm$ 2.0

Design and specifications are each subject to change without notice. Ask factory for the current technical specifications before purchase and/or use.  
Should a safety concern arise regarding this product, please be sure to contact us immediately.

## Requests to customers

Please refer to "the latest product specifications" when designing your product.

Requests to customers :

<https://industrial.panasonic.com/ac/e/salespolicies/>

## Safety Precautions

When using our products, no matter what sort of equipment they might be used for, be sure to confirm the applications and environmental conditions with our specifications in advance.

Please contact .....

**Panasonic Corporation**

Electromechanical Control Business Division

■ 1006, Oaza Kadoma, Kadoma-shi, Osaka 571-8506, Japan  
[industrial.panasonic.com/ac/e/](https://industrial.panasonic.com/ac/e/)

**Panasonic**<sup>®</sup>

©Panasonic Corporation 2019