

/ Avnet Global Business Migration

Design local, build anywhere

AVNET®



Avnet's Business Migration Team

Our philosophy is **Design local, build anywhere**

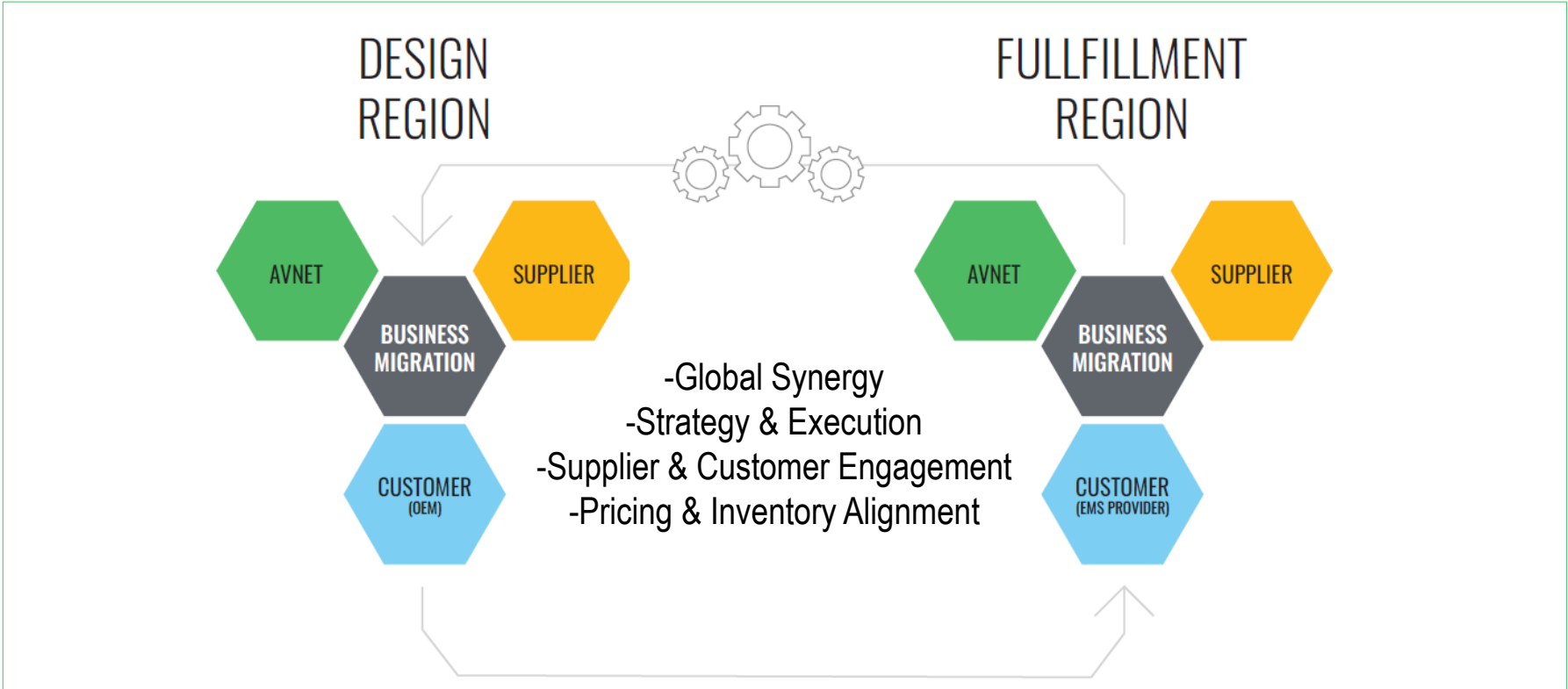
Avnet's global Business Migration Team (BMT) supports the '**Design local, build anywhere**' philosophy by working closely with customers and suppliers to provide safe passage for customers designing in one region and producing in another.

Local Avnet BMT members connect regional supplier and customer teams to ensure alignment on pricing and inventory as projects are migrated from one region to another.



Avnet global migration capability

Creates a sustainable competitive advantage for our customers



/ The value behind business migration



Obtain best price using supplier systems & linking to design registrations while tracking valuable data for customers.



Ensures customers experience a seamless global technology supply chain as products transition throughout the product lifecycle.



Collaborative approach with suppliers & sales to support pricing & delivery issues so requirements are clear, and issues are resolved.



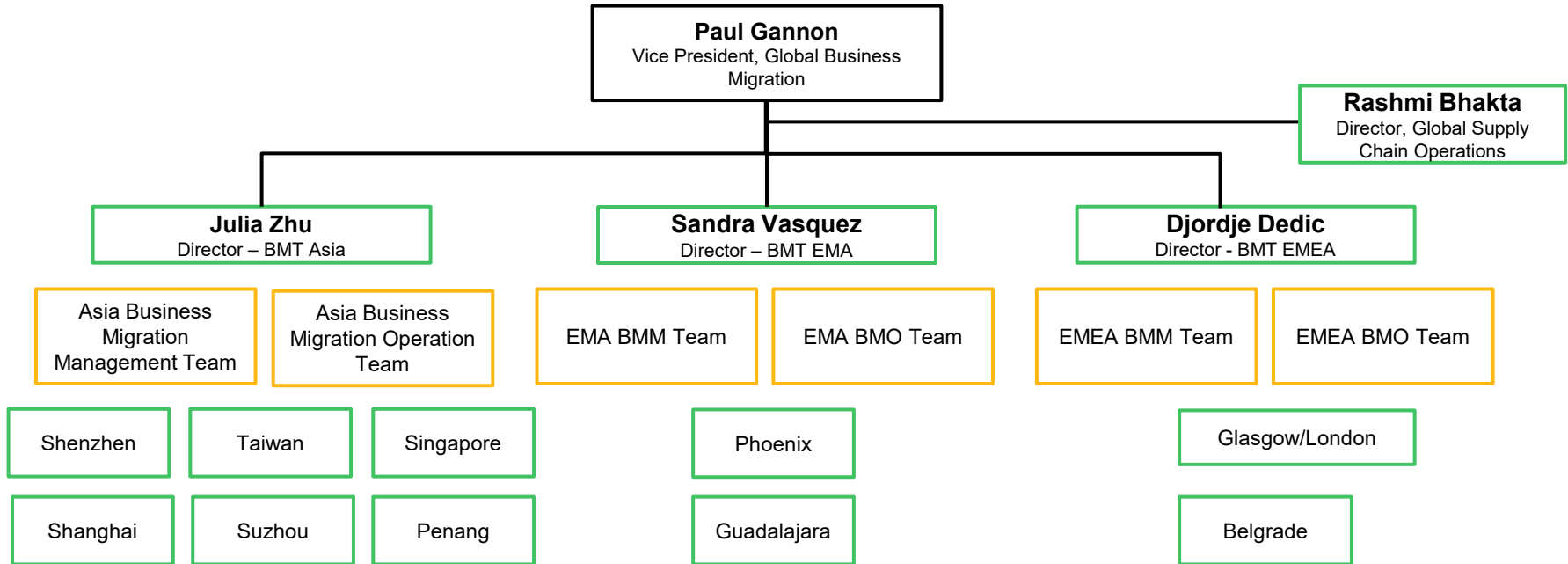
Coordinates with supplier and customer teams on migration projects to set up strategies based on customer needs.



Takes a collaborative approach to connect teams in different regions to ensure best-in-class support.

/ A dedicated team

Supporting customers globally

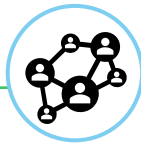


Avnet BMT in action

Avnet BMT works as the communication link between Avnet, suppliers and customers in the design and fulfilment regions to ensure a smooth migration of the customer's project while ensuring the design is protected in the fulfilment region..



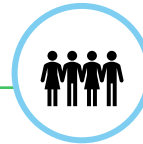
Foster collaboration on customer's requirements such as **supply chain** needs, project timelines, forecasts and design IP



Coordination of **pricing alignment** to ensure customers truly can "design local and build anywhere"

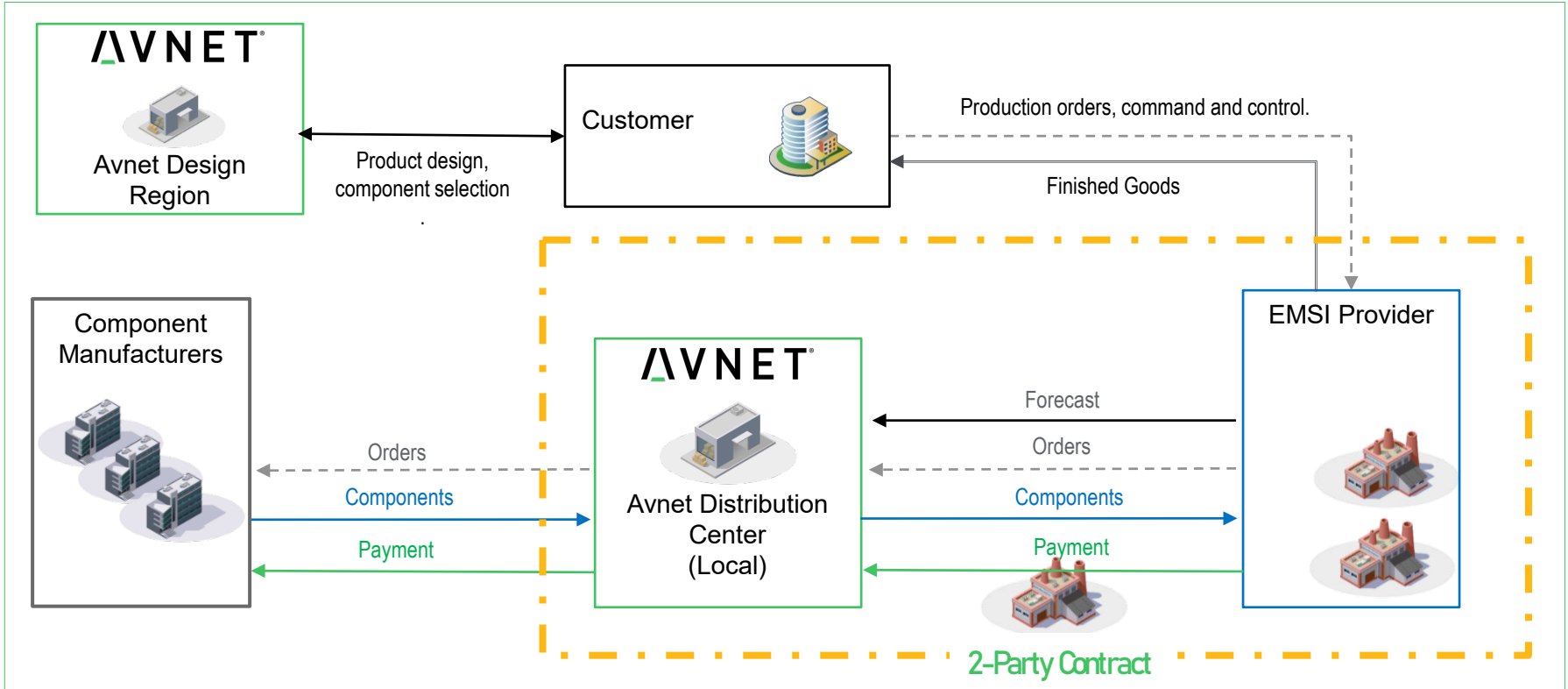


Assist with organizing **stock transfers** between design and fulfilment regions to help with customers' excess inventory or line-down situations



Liaison between supplier and sales teams to manage **pricing and registration** while ensuring global commonality

Example: Local supply chain



/ Design local, build anywhere

11 Distribution centers

15 Embedded design and manufacturing

06 Programming centers

250+ Locations globally

300+ Secondary facilities



📍 Primary distribution centers

- Chandler, Arizona
- Gaffney, South Carolina
- Guadalajara, Mexico
- Hong Kong
- Liege, Belgium
- Leeds, UK
- Tongeren, Belgium
- Poing, Germany
- Singapore
- Sydney, Australia
- Tao Yuan, Taiwan

📍 Design and manufacturing centers

- Aachen, Germany
- Acton, Massachusetts
- Ahmedabad, India
- Bristol, UK
- Chandler, Arizona
- Deggendorf, Germany
- Lyon, France
- Malta, Malta
- Munich, Germany
- Paris, France
- Seattle, Washington
- Stutensee Germany
- Tianjin, China

📍 Programming centers

- Chandler, Arizona
- Hollis, New Hampshire
- Guadalajara, Mexico
- Poing, Germany
- San Jose, California
- Singapore

We are here to
support you

- Design local, build anywhere