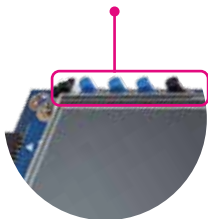




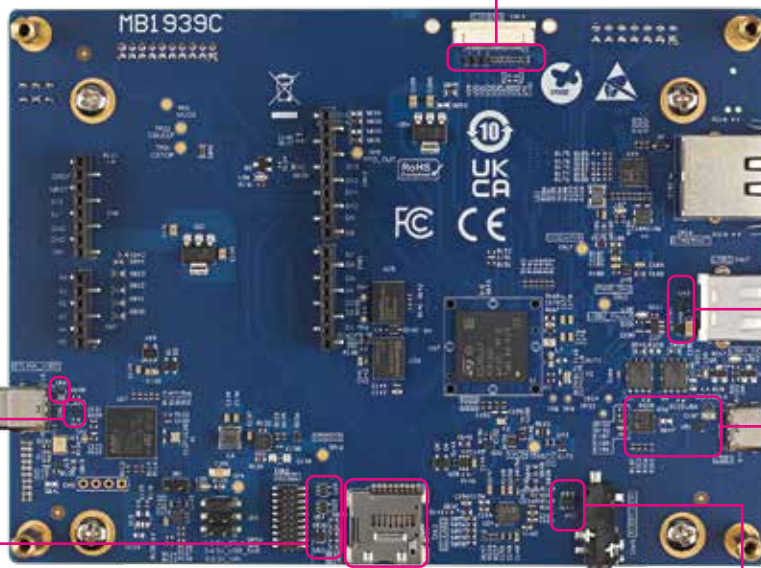
Protection & Filter devices in STM32N6570-DK Discovery Kit



Peripherals, buttons
ESDALC6V1-1U2 (x3)



Camera connector
ESDALC6V1-1U2 (x8)
ECMF2-40A100N6 (x3)



USB-HOST
ECMF2-40A100N6 (x1)
ESDA7P120-1U1M (x1)



USB1 Type-C DRP
UCPD management
TCPPO3-M20 (x1)
ECMF2-40A100N6 (x1)
ESDA25P35-1U1M (x1)



STLINK-V3EC
ECMF2-40A100N6 (x1)
ESDA25P35-1U1M (x1)



ESD protection
ESDALC6V1-1U2 (x1)
ESDALC6V1W5 (x3)



SD card
HSP051-4M10 (x2)



Audio stereo out with mic
ESDA6V1BC6 (x1)





Protection & Filter devices in STM32N6570-DK Discovery Kit

Maximizing MCU performance with advanced protection and EMI filtering.

ST ESD protection and EMI filter devices offer high protection and efficiency with low clamping voltage (V_{CL}), low leakage current (I_{RM}) for protection transparency, and ultralow capacitance and ultrawide bandwidth for signal integrity.

Device	Interfaces
ESDALC6V1-1U2	Peripherals (x3), camera connector (x8), ESD protection (x1)
HSP051-4M10	SD card (x2)
ESDALC6V1W5	ESD protection (x3)
TCPPO3-M20 (*)	USB1 Type-C DRP UCPD management
ECMF2-40A100N6 (*)	USB1 Type-C DRP (x1), USB-HOST (x1), STLINK-V3EC (x1), camera connector (x3)
ESDA7P120-1U1M	USB-HOST
ESDA25P35-1U1M	USB1 Type-C DRP (x1), STLINK (x1)
ESDA6V1BC6	Audio stereo out with mic

(*) eligible for design

Learn more



Learn more about STM32N6



Explore our application note AN5612
ESD protection of STM32 MCUs
and MPUs



Find out more at <https://www.st.com/en/protections-and-emi-filters.html>