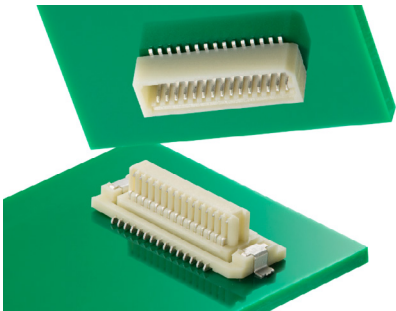


SlimStack Board-to-Board
Connectors, 0.80mm Pitch,
Floating Series

molex

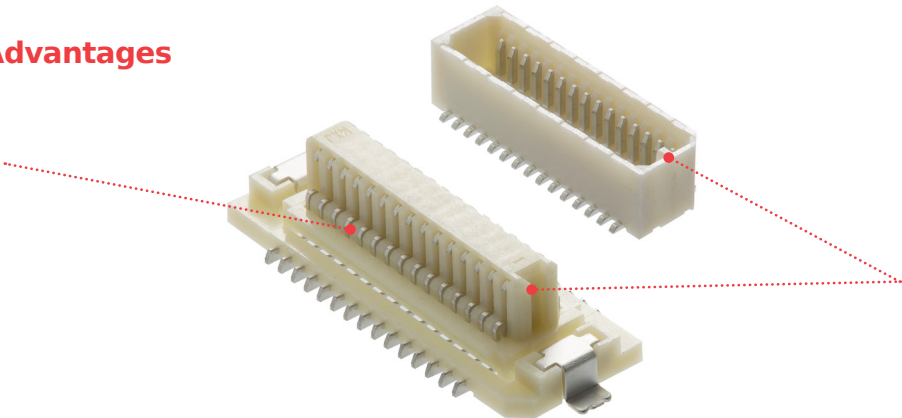
SlimStack B-to-B Connectors 0.80mm Pitch feature floating structure for user-friendliness of assembly process. The connectors have height variation and two kinds of mating directions for design flexibility. In addition, there are compatible receptacles to support many applications.

0.80mm Pitch Floating Series has a floating structure range of $\pm 0.30\text{mm}$. There are stack height variations from 5.50mm to 8.00mm with same footprint. Customers can select mating direction, and they also select floating or rigid type to meet their design. Molex Micro Solution design provides solutions to solve any market requirement.



Features and Advantages

Floating Structure
Reduces PWB gap.
Facilitates assembly in the event of misalignment or blind joining



Mating Guide Key
Accurate mating without right and left reversal

Lineup Combination					
Floating Type	Receptacle	Plug			
	52588	53307	53364	53353	53309
Mated Height (mm)	5.50 to 8.00	5.50	7.00	8.00	6.65
Rigid Type	Receptacle	Plug			
	52465	53307	53364	53353	53309
Mated Height (mm)	4.50 to 7.00	4.50	6.00	7.00	5.65

Applications

Automotive

Car Infotainment

Consumer

Smart Speakers

Home Appliances

Datacom

Servers

Office Equipment

Industrial

Automation Machines



Car Infotainment



Smart Speaker



Office Equipment

SlimStack Board-to-Board Connectors, 0.80mm Pitch, Floating Series

molex

Specifications

REFERENCE INFORMATION

Packaging: Embossed Tape on Reel
Designed In: Millimeters
RoHS: Yes
Halogen Free: No

ELECTRICAL

Voltage (max.): 50V
Current (max.): 0.5A per circuit
Contact Resistance (max.):
40 milliohms (mate with 52588 series)
20 milliohms (mate with 52465 series)
Dielectric Withstanding Voltage (min.): 500V AC
Insulation Resistance (min.): 100 Megohms

MECHANICAL

Mating Force (max.):
refer to product specification
Un-mating Force (min.):
refer to product specification
Durability (max.): 30 cycles

PHYSICAL

Housing: PA, UL-94V-0
Contact: Copper Alloy
Plating:
Contact Area – Refer to ordering information
Solder Tail Area – Refer to ordering information
Underplating – Nickel
Operating Temperature: -40 to +105°C

Dimensions

Refer to drawing for detail dimension

Ordering Information

Structure	Order No.		Mated Height (mm)	Mated Width (mm)	Orientation	Boss	Plating	Circuits
	Receptacle	Plug						
Floating Type	52588-**75	53307-**71	5.50	7.20	Vertical	Without Boss	Tin	18, 20, 30
		53364-**70	7.00			With Boss		
		53364-**71				Without Boss		
		53353-**71	8.00	Without Boss				
		53309-**70	6.65	With Boss				
		53309-**71		Without Boss				
Rigid Type	52465-**70	53364-**70	6.00	7.20	Vertical	With Boss	Tin	10, 12, 20, 28, 30, 36, 40
		53309-**70	5.65	4.70	Right Angle			10, 12, 14, 16, 18, 20, 22, 24, 26, 28, 30, 32, 36, 40
	52465-**71	53307-**71	4.50	7.20	Vertical	Without Boss		10, 12, 14, 16, 18, 20, 22, 24, 26, 28, 30, 36, 40
		53364-**71	6.00					18, 20, 30, 36
		53353-**71	7.00					10, 16, 18, 20, 28, 30, 40
		53309-**71	5.65	4.70	Right Angle			20, 24, 26, 28, 30, 40
		52465-**62	53309-**62				5.65	Gold

**: circuit size

www.molex.com/link/slimstack.html

Molex is a registered trademark of Molex, LLC in the United States of America and may be registered in other countries; all other trademarks listed herein belong to their respective owners.

Order No. 987651-8814

APN/0K/GF/2018.08

©2018 Molex