



Industrial AI Real Time Edge Computing

Simplify Development, Amplify Performance

Unlock the true potential of AI-driven applications with **ASTRIAL** AI Accelerator System on Module (SoM). With flexibility, scalability, and energy efficiency at its core, **ASTRIAL** accelerates your path from prototype to production helping you innovate faster, smarter, and with resources you have.

Rapid Deployment:

Speed up time to market with an easy-to-integrate CM4 compatible solution.

Real-Time Edge AI:

Perform AI tasks at the edge with no latency.

Energy Efficiency:

Maximize performance while conserving power.

Scalable:

Flexible for single-device use or large-scale applications.

Cost-Effective:

Lower hardware complexity and overall costs.



Powered by the
i.MX 8M Plus
Hailo-8



In partnership with

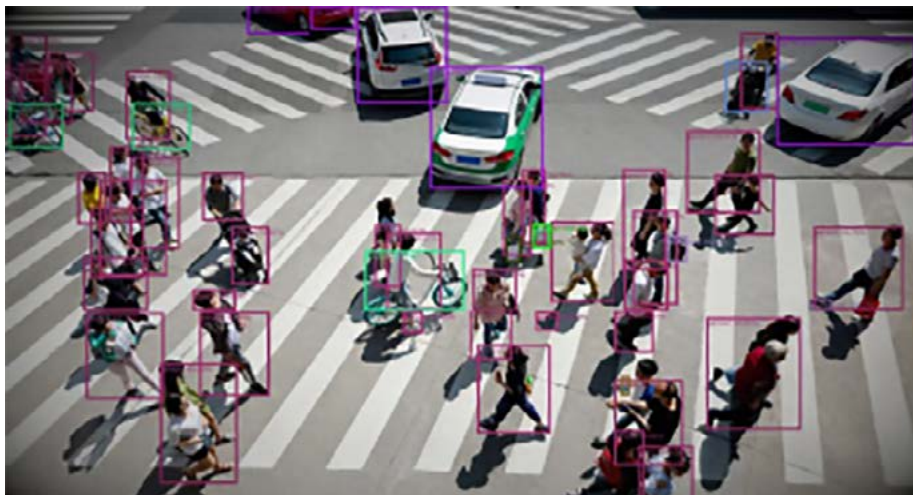


Applications:

- Surveillance
- Drones
- AMRs
- Robotics
- Visual Inspection
- Gesture recognition
- Face recognition
- Object detection



Demo



Technical specification:

Processing	i.MX 8M Plus (4 x Cortex A53 + cortex M7 2,3 TOPS)
AI	Hailo-8 (26 TOPS)
Memory	RAM 8 GB LBDDR4 / eMMC 32 GB
Video / HMI	Hardware H.264/H.265 encoder/decoder
	Dual ISP for camera
	GPU for HMI
Security	Enhanced IoT EdgeLock SE050
Peripherals	Gigabit Ethernet PHY
	26 x GPIO HEADER
	1 x USB 2.0, 2 x UART, 3 x I2C, 2 x SPI, 2 x SDIO, 1 x PCM
	1 x PWM, 1 x HDMI, 1 x CANbus
	1 x 4-lane MIPI DSI, 1 x 2-lane MIPI CSI, 1 x 4-lane MIPI CSI
Power	consumption From 3W up to 8W
BSP	Linux YOCTO Kirkstone / LTS and GitHub support
From factor	CM4 footprint (40 x 55 mm)

Ordering information:

Part Number	description
2E001866	Astrial Industrial iMX8 / HAILO-8 / 8GB-RAM / 32GB-eMMC 32MB-NO
2E001867	Astrial Commercial iMX8 / HAILO-8 / 8GB-RAM / 32GB-eMMC 32MB-NO
ASTRIALSPK	2E001866 sample / heatsink
ASTRIALDEV	2E001866 sample / heatsink / power supply / expansion board