



## Power Interconnect Solutions

FCI offers a broad range of standard and customizable power interconnect products for connections between circuit boards, cables, and busbars in industrial and datacenter applications.

See how we can help you create a more efficient and cost-effective solution.

[power.fci.com](http://power.fci.com)

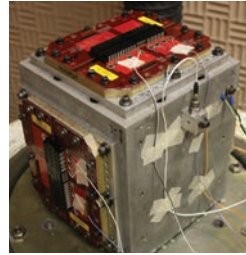
## ▶ INTRODUCTION

**FCI Electronics** is a leading supplier of high performance power connectors to companies that manufacture computing, networking, telecommunications, industrial control, lighting, and energy conversion equipment.

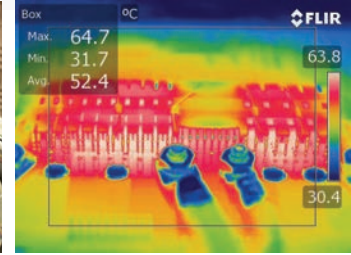
FCI goes to great lengths to ensure the quality and long-term reliability of our products. We conduct extensive accelerated life tests to validate the expected results of our power connectors after years of use. These tests include, but are not limited to, environmental exposure, (humidity, industrial gas, etc.), thermal cycling, shock and vibration, and close monitoring of current and temperature.

This brochure features some key products from FCI's Power Solutions portfolio. We've arranged the connectors from low to high power, ranging from 3 to 300 amps per contact. You'll also find information about our Power Distribution products. FCI offers complete distribution solutions custom-designed to specific applications. For more information on any of the products in this brochure please visit [power.fci.com](http://power.fci.com) or contact an FCI sales representative at any FCI location.

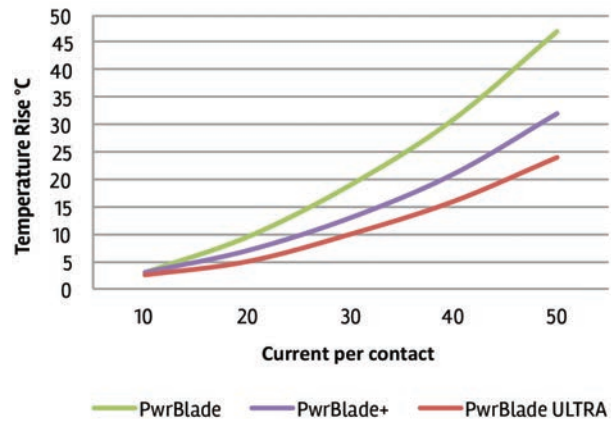
### Shock and Vibration Testing



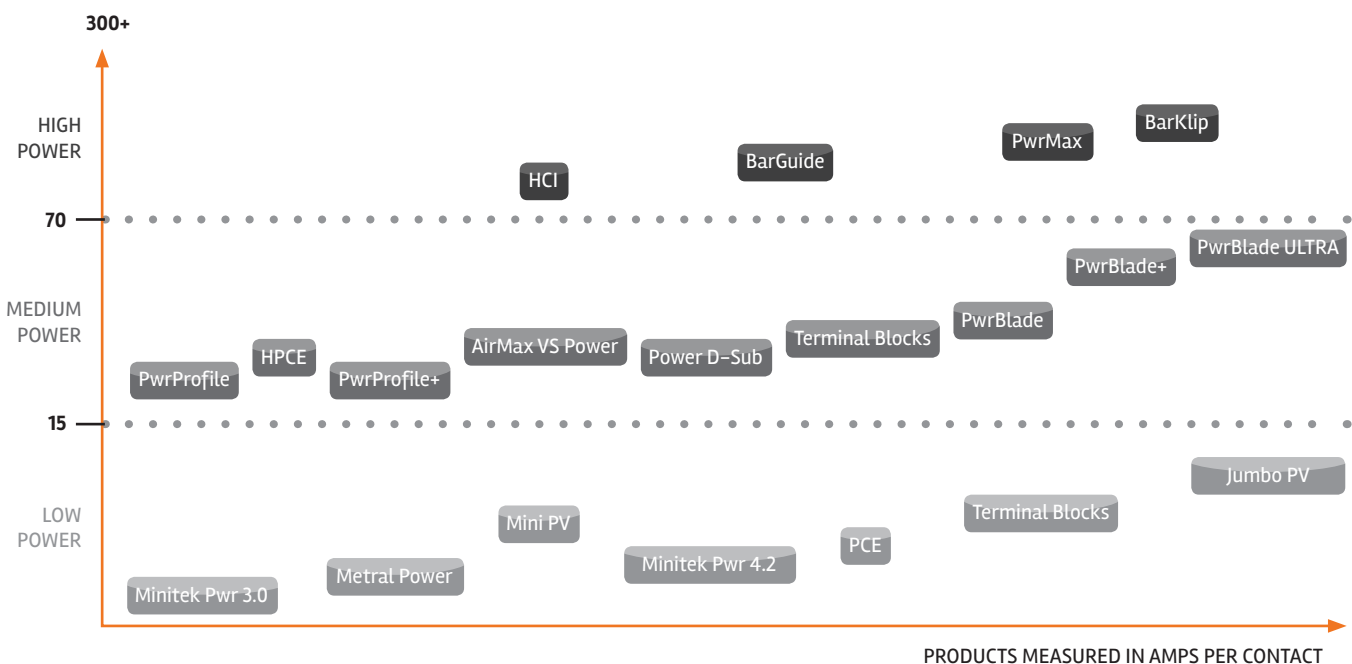
### Temperature Monitoring at Extreme Environments



### Comparison Testing Current vs. Temperature Rise



## ▶ FEATURED PRODUCTS



# TYPICAL DATACENTER APPLICATION



## AirMax VS® Power

- Backplane
- 30A per contact



## BarKlip™

- 150/300A per contact



## Busbars

- Custom shape/ sizes
- Up to 1000A



## PwrBlade+™

- 25/60A per contact



## Pwr TwinBlade®

- Wire-to-board
- 100A per wire



## Terminal Blocks

- Wire-to-board
- 5-50A per contact



## PwrBlade®

- Wire-to-board
- 40A per contact



## PwrMax™

- 19.8mm tall
- 100A per contact



## BarGuide™

- 60-250A per contact



## HPCE®

- 7.5mm wide
- 15/30A per contact



## PwrBlade ULTRA®

- 9.6mm tall
- 25/65A per contact



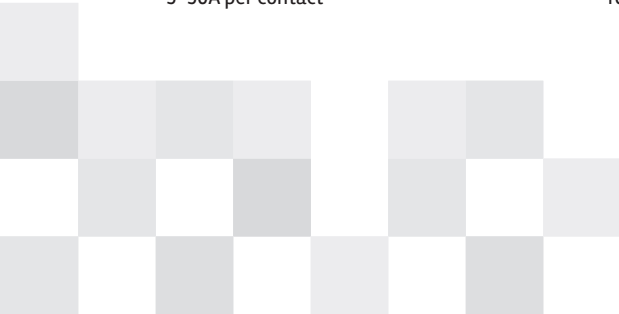
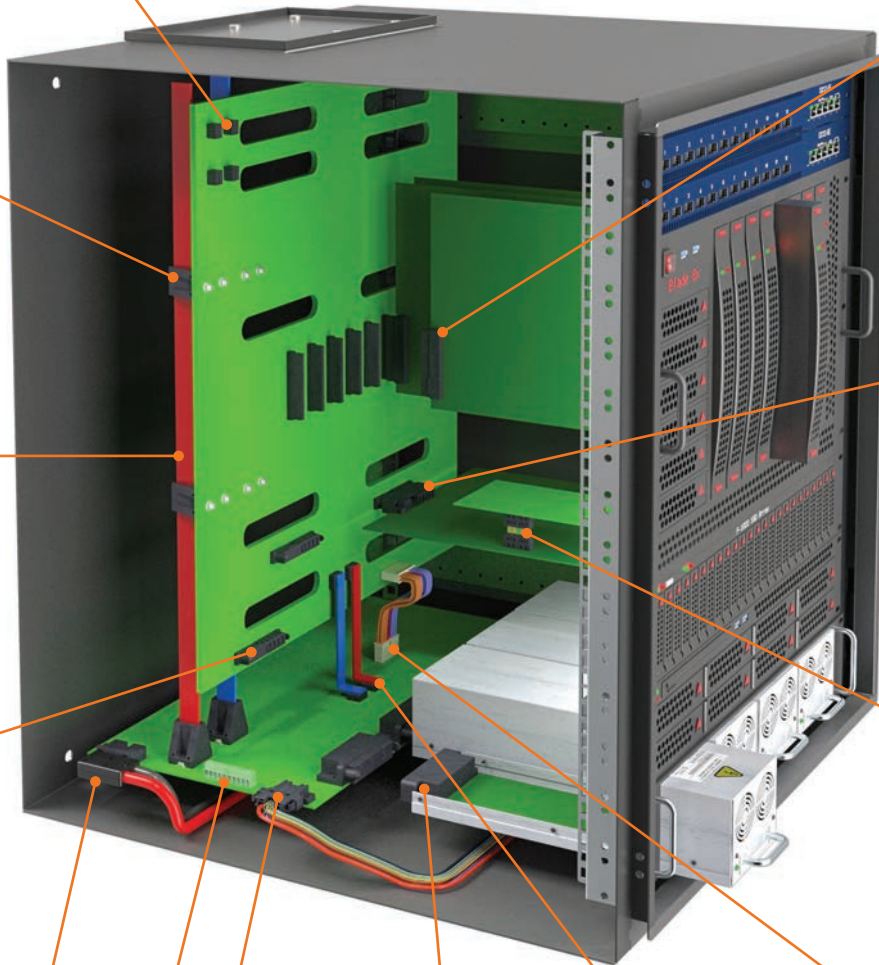
## HPCE® Mezzanine

- 32mm-44mm tall
- 15/30A per contact

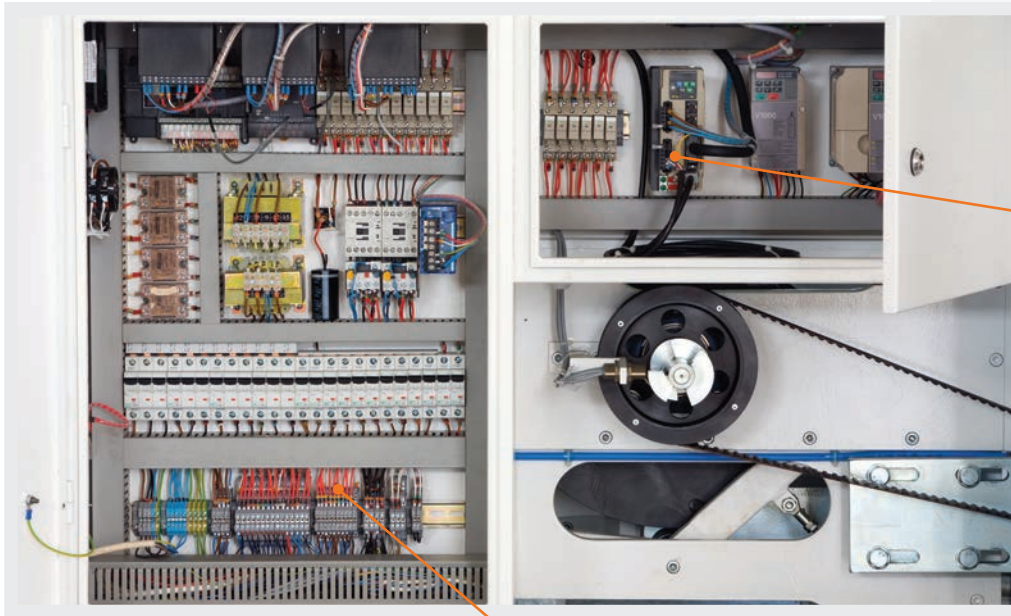


## Minitek Pwr™

- Wire-to-board
- 4/9A per contact



## ▶ TYPICAL INDUSTRIAL APPLICATIONS



Minitek Pwr™

Terminal Blocks

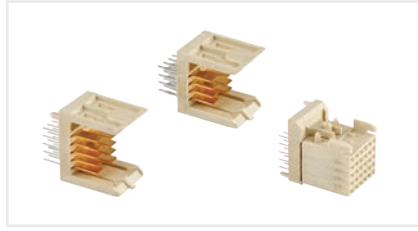
## ▶ OTHER TYPICAL APPLICATIONS





### Minitek Pwr™ 3.0

- Wire-to-wire and wire-to-board
- Up to 5A per contact
- 3.0mm contact pitch
- 26AWG – 24AWG wires
- Vertical and right-angle PCB headers



### Metral® Power

- Board-to-board
- 3A per contact
- 12.5mm hard metric
- IEC 61076-4 compatible end-to-end with other Metral modules



### Mini PV

- Wire-to-board
- 3A per contact
- 28AWG – 26AWG
- High durability contact up to 1,000 mating cycles



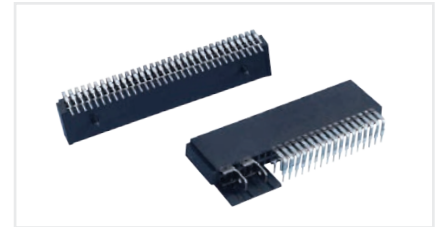
### Minitek Pwr™ 4.2

- Wire-to-wire, wire-to-board and wire-to-panel
- Up to 9A per contact
- 4.2 contact pitch
- 24AWG – 18AWG wires
- Right-angle or straight receptacles



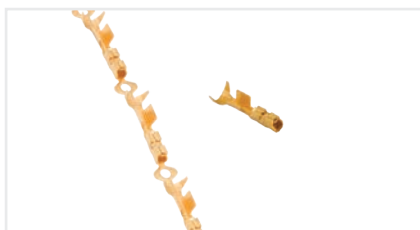
### Terminal Blocks

- Wire-to-board
- Up to 20A per contact
- Pitch from 2.5mm – 19.0mm
- 24AWG – 6AWG
- Vertical and right angle PCB mount
- Rising-cage or spring-contact designs



### PCE

- Card edge-to-board
- Up to 7A per contact
- 2.54mm contact pitch
- Right angle, vertical and straddle mount



### Jumbo PV

- Wire-to-board
- Up to 7A per contact
- Pitch from 2.5mm – 19.0mm
- High durability contact up to 1,000 mating cycles

## ▶ MEDIUM POWER CONNECTORS



### PwrProfile®

- Cable-to-board
- Up to 20A per contact
- 16AWG – 14AWG
- Low profile: 7.5mm board height



### AirMax VS® Power

- Board-to-board
- Up to 30A per contact
- 12.5mm hard metric
- Designed for use with ZipLine®, AirMax VS® and Millipacs® connector series



### HPCE®

- Card edge-to-board, board-to-board, cable-to-board and cable-to-card edge
- 30A per contact (quad-beam) and 15A per contact (dual-beam)
- Right angle, vertical, straddle mount and cable
- Wide variety of connector sizes



### Power D-Sub

- Cable-to-board
- Up to 40A per contact
- Full power and mixed layout (signal + power) – 2V2 to 36W4
- Power contacts available in solder or crimp termination



### Terminal Blocks

- Wire-to-board
- Up to 50A per contact
- Pitch from 2.5mm – 19.0mm
- 24AWG – 6AWG
- Vertical and right angle PCB mount
- Rising-cage or spring-contact designs



### PwrProfile+®

- Cable-to-board
- Up to 34A per contact
- 14AWG – 12AWG
- Signal contacts included for hot swap applications



### PwrBlade®

- Board-to-board and cable-to-board
- Up to 40A per contact
- 5.08mm, 6.35mm and 7.62mm contact pitch
- 14AWG – 8AWG wires
- Vertical and right angle PCB mount and cable
- Configurable power and signal mix



### PwrBlade+™

- Board-to-board, cable-to-board
- Up to 60A per contact
- 5.08mm, 6.35mm and 7.62mm contact pitch
- 14AWG – 6AWG wires
- Vertical and right angle PCB mount and cable
- Low power and high power contacts



### PwrBlade ULTRA®

- Board-to-board
- Up to 65A per contact
- 3.5mm, 5.01mm and 7.0mm contact pitch
- Vertical and right angle PCB mount
- 9.6mm above PCB; 24% lower in height than PwrBlade®

## ▶ HIGH POWER CONNECTORS



### HCI®

- Board-to-board
- Up to 100A per contact
- 6mm contact pitch
- 12.5mm hard metric
- Right angle and vertical PCB Mount



### BarKlip™

- Busbar-to-busbar, busbar-to-cable and busbar-to-board
- Up to 300A per contact
- 14AWG – 2AWG wires
- Right angle, vertical, and cable
- Open-end walls allow for infinite busbar length



### BarGuide™

- Board-to-board, busbar-to-board and busbar-to-busbar
- Up to 250A per contact
- High reliability and low contact resistance
- Low mating force/ high cycle durability

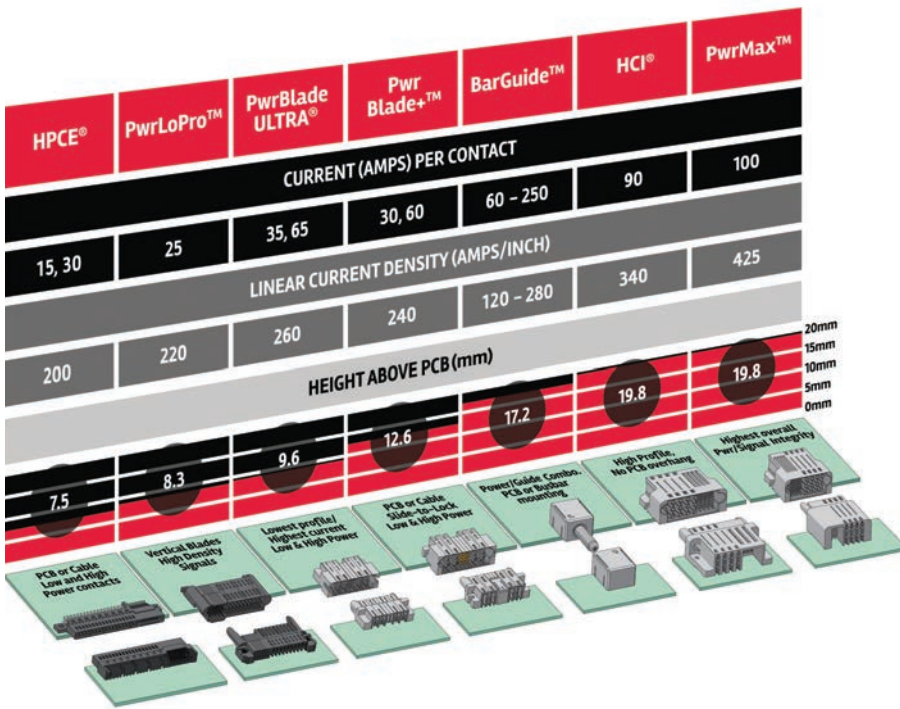


### PwrMax™

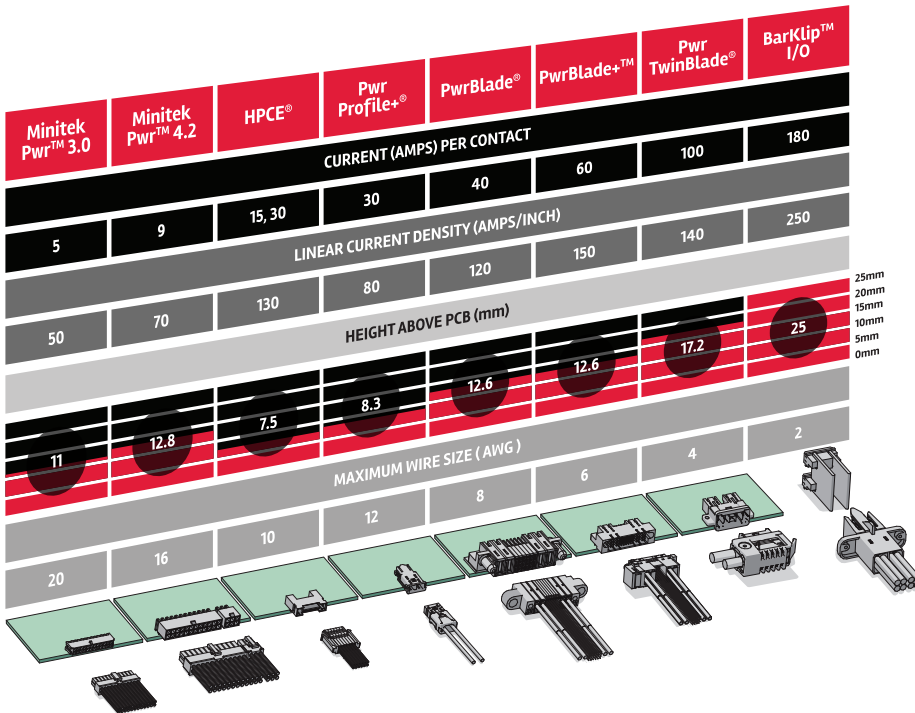
- Board-to-board
- Up to 100A per contact
- 5.0mm pitch

## ▶ PERFORMANCE COMPARISON CHARTS

### POWER SOLUTIONS PORTFOLIO BOARD-TO-BOARD PERFORMANCE MATRIX



### POWER SOLUTIONS PORTFOLIO CABLE ASSEMBLY PERFORMANCE MATRIX



For more information,  
please contact: [Communications@fci.com](mailto:Communications@fci.com)  
or visit us at [www.fci.com](http://www.fci.com)

**Disclaimer**  
Please note that the above information is subject to change without notice.



# ▶ POWER DISTRIBUTION ASSEMBLIES

## BUSBAR POWER DISTRIBUTION

- Space-saving
- Ease of installation
- Improved thermal characteristics
- Improved electrical performances
- Long-term reliability and better quality
- A cost-effective solution

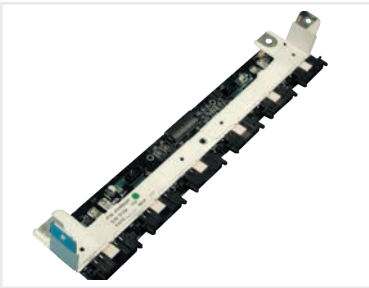
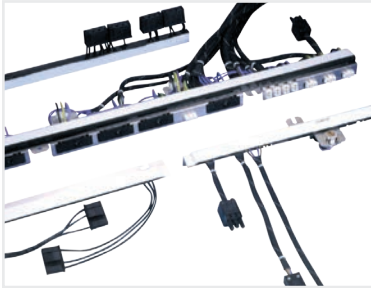
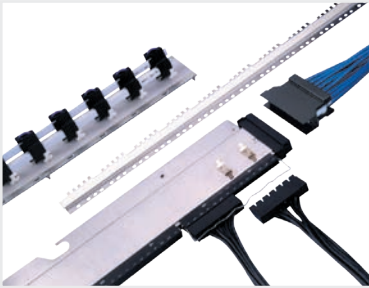


### CAPABILITIES

- Single Coated
- Potting
- Welding
- Laminated
- Powder Coating
- 1mm to 6mm

### APPLICATIONS

#### ▪ COMMUNICATIONS & DATA

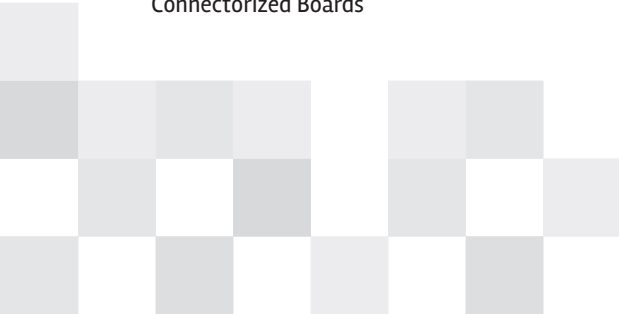


Backplanes & Power Connectorized Boards

#### ▪ RENEWABLE ENERGY



#### ▪ HYBRID AND ELECTRIC VEHICLES (HEV)



## ▶ CABLE ASSEMBLIES

PRODUCTS	WIRE SIZE	CURRENT RATING	HIGHLIGHTS	CAPABILITIES
 <p>Minitek Pwr™ 4.2</p>	24–18AWG (0.25–0.75mm <sup>2</sup> )	Up to 9A	Right angle or straight receptacles.	
 <p>HPCE® <b>NEW</b></p>	26–10AWG (0.14–6mm <sup>2</sup> )	Up to 30A	1 piece (cable mating to edge card) and 2 piece (cable mating to PCB header).	
 <p>PwrBlade+™ <b>NEW</b></p>	14–6AWG (2.5–16mm <sup>2</sup> )	Up to 60A	Connects with right angle or vertical board mounted headers. Squeeze to release or panel mount form factors.	<ul style="list-style-type: none"> <li>▪ Custom over-molding</li> <li>▪ Crimp quality monitoring</li> <li>▪ Ultrasonic Welding</li> <li>▪ High Flex Wires</li> </ul>
 <p>Pwr TwinBlade®</p>	10–2AWG (6–35mm <sup>2</sup> )	100A/Twin Contact	Both halves are touch proof. Four coding options.	
 <p>BarKlip™ I/O <b>NEW</b></p>	14–2AWG (2.5–35mm <sup>2</sup> )	Up to 200A	Direct pluggable connection to busbar. True compliant spring adjusts for variations in busbar alignments and surface finish.	

## FCI HEADQUARTERS

### FCI ASIA PTE LTD

159 Kampong Ampat, KA Place #04-01/04 Singapore 368328  
Tel: 65 6549 6666 Fax: 65 6738 4122  
Email: fciasia\_sales@fci.com



## FCI SALES OFFICES

### AUSTRIA

C/O FCI DEUTSCHLAND GMBH  
Tel: 49 0 6171 / 886 0  
Email: germany@fci.com

### CHINA

FCI CONNECTORS SHANGHAI CO LTD  
**Beijing Branch Office**

Room 609, 6th Floor, Building C  
Webok Times Center  
No.17 Zhongguancun South Street  
Haidian District, Beijing  
100081, P.R. China  
Tel: 86 10 6526 3802 / 3 / 4  
Fax: 86 10 6526 3805  
Email: fcibj\_sales@fci.com

FCI CONNECTORS SHANGHAI CO LTD  
**Shanghai Branch Office**

Room 4C, Inlong Mansion  
No. 1358 West Yan An Road  
Shanghai 200052 P.R. China  
Tel: 86 21 61257666  
Fax: 86 21 61257677  
Email: fcisha\_sales@fci.com

FCI CONNECTORS SHANGHAI CO LTD  
**Shenzhen Branch Office**

Room 401, ZhongShen Garden  
CaiTian South Rd, Futian District  
Shenzhen 518033 P.R. China  
Tel: 86 755 8520 6900  
Fax: 86 755 2518 1730  
Email: fcishenz\_sales@fci.com

FCI CONNECTORS SHANGHAI CO LTD  
**Suzhou Branch Office**

Room 1005A, Century Financial  
Tower, No. 1 Suzhou Avenue West  
Industrial Park Suzhou  
215021, P.R. China  
Tel: 86 512 8716 3099  
Fax: 86 512 8716 3089  
Email: fcisuzh\_sales@fci.com

### FRANCE

FCI BESANÇON SA  
2, Rue la Fayette  
25000 Besançon France  
Tel: 33 3 81 54 6063  
Fax: 33 3 8154 5938  
Email: france@fci.com

### GERMANY

FCI DEUTSCHLAND GMBH  
An den Drei Hasen 37  
Oberursel / Ts. 61440 Germany  
Tel: 49 0 6171 / 886 0  
Fax: 49 0 6171 / 886 111  
Email: germany@fci.com

### HONG KONG

FCI PRC LTD  
Unit 19-20, 19/F  
Chevalier Commercial Centre  
No. 8 Wang Hoi Road, Kowloon Bay  
Kowloon, Hong Kong  
Tel: 852 2510 8131  
Fax: 852 2510 7743  
Email: fcikh\_sales@fci.com

### HUNGARY

FCI ELECTRONICS HUNGARY KFT  
Fő tér 30.  
Tatabanya 2800  
Hungary  
Tel: 36 34 517 609  
Fax: 36 34 517 516  
Email: hungaryelx@fci.com

### INDIA

FCI OEN CONNECTORS LTD  
**Bangalore Branch Office**  
E-206, 2nd Floor  
Sunrise Chambers  
22-Ulsoor Road  
Bangalore 560042 India  
Tel: 91 80 2559 7149/ 2555 0852  
Fax: 91 80 2558 8551  
Email: fciindia\_sales@fci.com

FCI OEN CONNECTORS LTD

**Chennai Branch Office**  
#130-B, 4th Floor  
B. B. R. Towers, Mudichur Road  
West Tambaram  
Chennai 600045 India  
Tel: 91 44 2226 1695  
Fax: 91 44 2226 1695  
Email: fciindia\_sales@fci.com

FCI OEN CONNECTORS LTD

**Cochin Branch Office**  
Thykooodam, Vyttila, PB No. 1958  
Cochin 682019 Kerala India  
Tel: 91 484 4090 700/ 2303 027  
Fax: 91 484 2304 279/ 2301 973  
Email: fciindia\_sales@fci.com

FCI OEN CONNECTORS LTD

**Pune Branch Office**  
#305 Garden Plaza  
Near Five Gardens Society  
Aundh-Ravet Road, Rahatani  
Pune 411017 India  
Tel: 91 20 6450 0331  
Mob: 91 484 2304 279/ 2301 973  
Email: fciindia\_sales@fci.com

### ITALY

FCI CONNECTORS ITALIA SRL  
Corso Vinzaglio, 16  
Torino 10121 Italy  
Tel: 39 36 6927 3956  
Email: italyelx@fci.com

### JAPAN

FCI JAPAN K. K.  
**Osaka Branch Office**  
4F Shin-Osaka Terasaki No.3  
Building  
1-5-28, Nishi-Miyahara  
Yodogawa-ku  
Osaka 5320004 Japan  
Tel: 81 6 6398 5180  
Fax: 81 6 6398 5185  
Email: fcijpn\_sales@fci.com

FCI JAPAN K. K.

**Tokyo Branch Office**  
2F, NT Building, 1-47-1  
Ooi, Shinagawa-ku  
Tokyo 1400014 Japan  
Tel: 81 3 4334 5000  
Fax: 81 3 4334 5151  
Email: fcijpn\_sales@fci.com

### KOREA

FCI CONNECTORS KOREA LTD  
#914-102-Dong  
Digital Empire 2 Building  
Shinwon-ro 88, Yeongtong-gu  
Suwon-si, Gyeonggi-do 443-734  
Korea  
Tel: 82 31 695 8601  
Fax: 82 31 695 8600  
Email: fcikorea\_sales@fci.com

### MALAYSIA

FCI CONNECTORS MALAYSIA SDN  
BHD  
1 Lot C (1277), Ground Floor  
Ixora Hotel Prai  
Jalan Baru, Bandar Perai Jaya  
13600 Perai, Penang Malaysia  
Tel: 604 6192628  
Fax: 604 6192608  
Email: fcipen\_sales@fci.com

### NETHERLANDS

C/O FCI DEUTSCHLAND GMBH  
Tel: 49 0 6171 / 886 0  
Email: germany@fci.com

### SINGAPORE (ASEAN)

FCI ASIA PTE LTD  
159 Kampong Ampat  
KA Place #04-01/04  
Singapore 368328  
Tel: 65 6549 6666  
Fax: 65 6738 6311  
Email: fcising\_sales@fci.com

### SPAIN

FCI INTERCONNECT IBERICA S.I  
Calle Balmes 191  
6.1°.a, Barcelona Catalunya  
8006 Spain  
Tel: 34 93 23 89 174  
Fax: 34 93 41 59 951  
Email: spain@fci.com

### SWEDEN

FCI CONNECTORS SWEDEN AB  
Förmansvägen 1  
SE-117 43 Stockholm  
Stockholm 100 74 Sweden  
Tel: 46 8 685 53 00  
Fax: 46 8 685 5355  
Email: sweden@fci.com

### SWITZERLAND

C/O FCI DEUTSCHLAND GMBH  
Tel: 49 0 6171 / 886 0  
Email: germany@fci.com

### TAIWAN

FCI TAIWAN LTD  
23F, 99, Xin-Pu 6th street  
Taoyuan City, Taoyuan County  
33044 Taiwan  
Tel: 886 3 452 4300  
Fax: 886 3 451 5371  
Email: fcitwn\_sales@fci.com

### THAILAND

FCI ASIA PTE LTD  
THAILAND REPRESENTATIVE OFFICE  
Unit 6, 11th Floor, Rasa Tower  
555 Phaholyothin Road  
Chatuchak, Bangkok 10900  
Tel: 662 937 0072 / 3 / 4  
Fax: 662 937 0076  
Email: fcithai\_sales@fci.com

### UNITED KINGDOM

FCI UK LTD  
Tel. : 44 0 845 602 8275  
Email: uk@fci.com

### USA

FCI USA LLC  
**Valley Green Branch Office**  
825 Old Trail Road  
Etters, Pennsylvania 17319  
USA  
Tel: 1 800 237 2374  
Fax: 1 717 938 7527  
Email: technicalservices@fci.com

FCI USA LLC

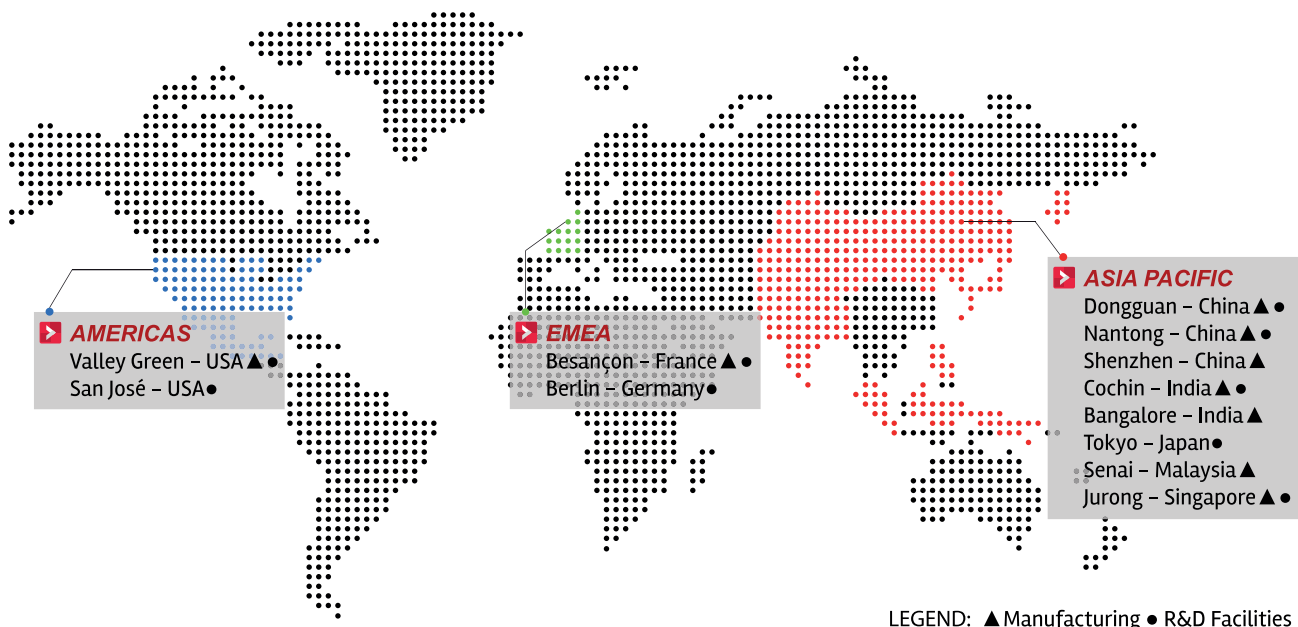
**San Jose Branch Office**  
2880 Zanker Road  
Suite 210, San Jose  
California 95134  
USA  
Tel: 1 717 938 7920  
Email: technicalservices@fci.com



Our corporate social responsibility (CSR) objective is to minimize our effects on the environment, ensure safe and healthy working conditions, promote human rights and give back to the community. We support the Electronics Industry Citizenship Coalition (EICC) common code of conduct for supply chain responsibility and engage with suppliers to minimize risks and address shared challenges on CSR.

When you purchase a Power Interconnect Solutions Product from FCI, you can also feel comfortable knowing that you're being responsible.

## ▶ FCI MANUFACTURING AND R&D FACILITIES



[www.fci.com](http://www.fci.com)

For more information, please contact: [communications@fci.com](mailto:communications@fci.com)