

EBV SmartSensing&Connectivity

Selection guide

managed by
Uros Mali, Director Segment Smart Sensing & Connectivity

December 2021

ABOUT EBV

Vision Statement

EBV Elektronik will remain the leading specialist in EMEA semiconductor distribution by being the partner of choice for its customers, suppliers and employees.

Mission Statement

Since 1969, the underlying company philosophy:

Operational excellence, flexibility, reliability and execution

Achieve the highest degree of customer satisfaction

EBV Shaping for the Future

Ecosystem

- Collaboration with communities (hackster, element14)
- Utilise Farnell for service and small customers
- Increase collaboration with Avnet Abacus to offer complete solutions

New business

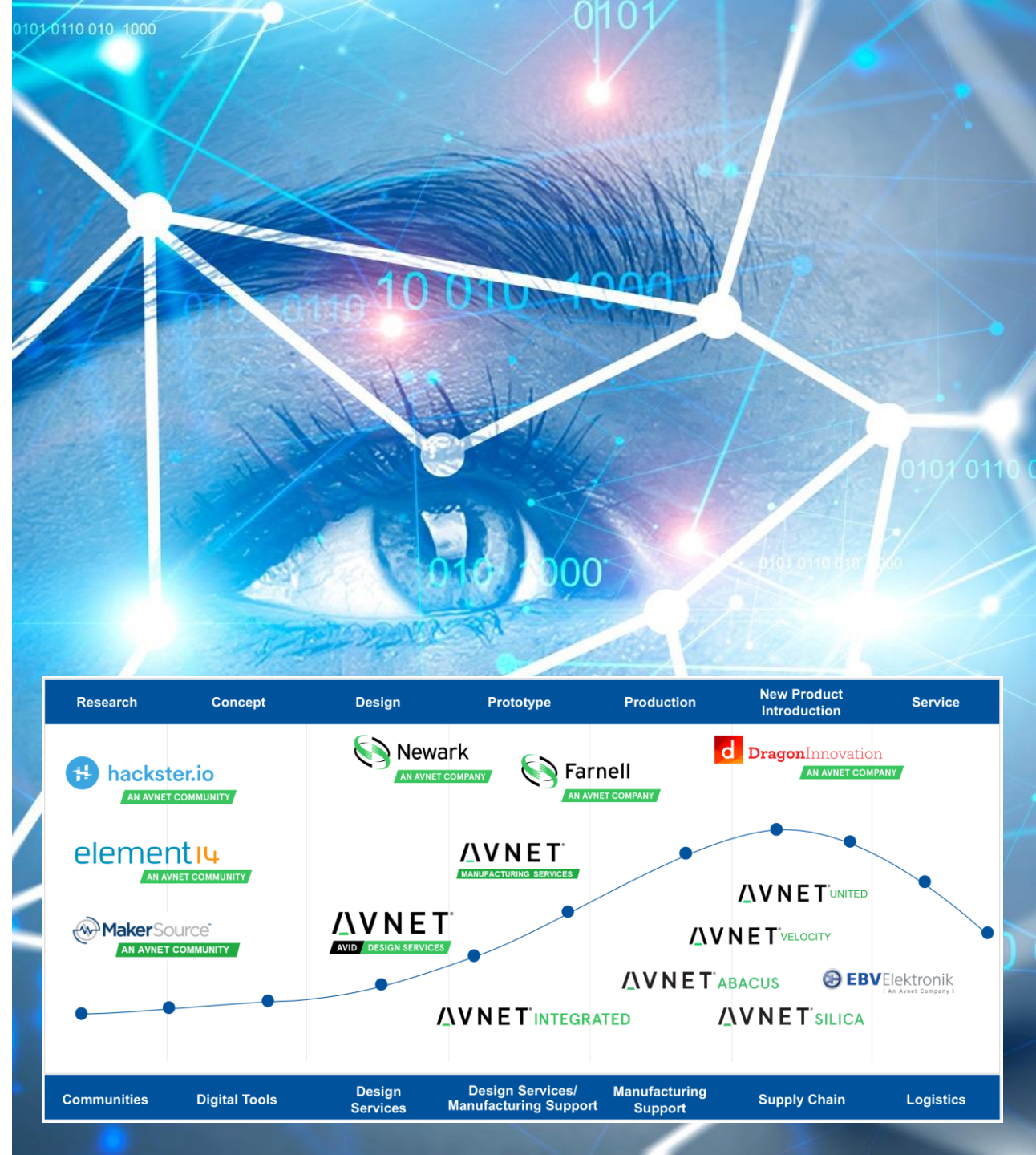
- Modules, software, data center

From IoT to AI

- Support technology journey of our customer

Supplier focus

- Renewed linecard



EBV SmartSensing&Connectivity

The presenter

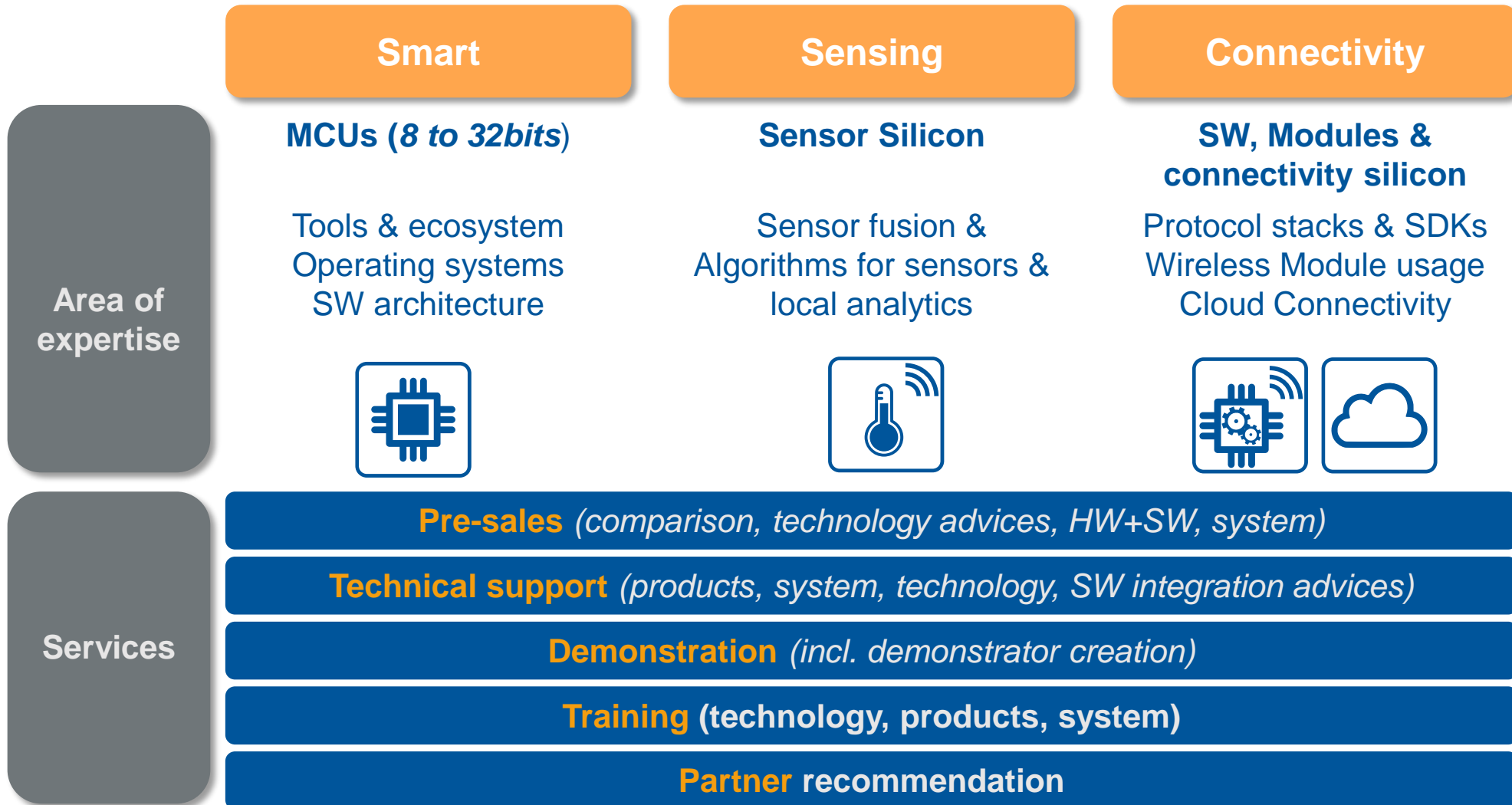
dr. Uroš Mali

- electronics enthusiast – 30+ years
- semiconductors distribution
 - 15+ years
 - up to date with most recent technologies
 - EMEA is my office
- **All-in-one**
 - HW design
 - SW design
 - 3D design



EBV SmartSensing&Connectivity

SEGMENT OFFER & UNIQUE COMPETENCES



EBV Technology Segment Smart Sensing & Connectivity

Focus

- Microcontrollers
- Sensors
- Connectivity Solutions
- Connectivity Software & Services



Smart Sensing & Connectivity – Suppliers





Smart Sensing & Connectivity Sensor technologies (Download)

Main slide deck

EBV-IoT - Sensors

Dedicated slide decks

EBV-IoT - ToF



EBV-IoT - UWB



Smart Sensing & Connectivity Sensor technologies

Main slide deck

EBV-IoT - Sensors

Dedicated slide decks

EBV-IoT - ToF



EBV-IoT - UWB





Smart Sensing & Connectivity

Wireless connectivity (Download)

EBV-IoT – Cellular



eSIM (eUICC)



EBV-IoT – Protocols
(MQTT, CoAP, LwM2M,
NIDD)

EBV-IoT - WiFi



EBV-IoT – LPWA (LoRa, Sigfox, ...)



EBV-IoT - Bluetooth



EBV-IoT – ZigBee





Smart Sensing & Connectivity

Wireless connectivity

EBV-IoT – Cellular



eSIM (eUICC)



EBV-IoT – Protocols
(MQTT, CoAP, LwM2M,
NIDD)

EBV-IoT - WiFi



EBV-IoT – LPWA (LoRa, Sigfox, ...)



EBV-IoT - Bluetooth



EBV-IoT – ZigBee



ARE YOU LOST IN A WIRELESS WORLD?



The background is a vibrant blue gradient. Overlaid on this is a complex wireframe structure of thin white lines forming a grid of irregular polygons. Small white spheres are placed at the vertices of this grid. Additionally, a pattern of stylized, light blue human figures is scattered across the scene, appearing to be part of the wireframe or floating within it. The overall aesthetic is clean, modern, and tech-oriented.

**TECHNOLOGY.
PASSION.
EBV.**