

6 mm Square Middle Travel 2 terminals SMD Light Touch Switches

Type: **EVPBD**



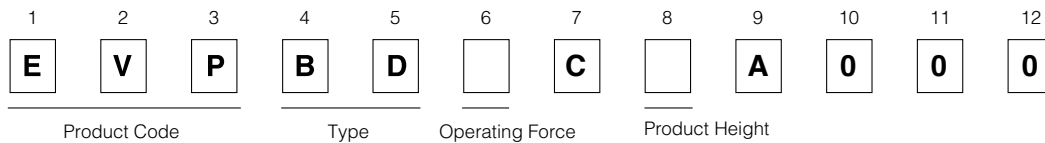
■ Features

- External dimensions : 6.0mm×6.0 mm, Height 4.0 mm
- Sharp feeling and silent by metal dome and rubber dome

■ Recommended Applications

- Operating switches for car electronic equipment, car audio systems, etc.
- Steering switches

■ Explanation of Part Numbers



■ Specifications

Type		Snap action/Push-on type SPST
Electrical	Rating	10 μ A 2 V DC to 20 mA 15 V DC (Resistive load)
	Contact Resistance	500 m Ω max.
	Insulation Resistance	100 M Ω min. (at 100 V DC)
	Dielectric Withstanding Voltage	250 V AC for 1 minute
	Bouncing	10 ms max. (ON, OFF)
Mechanical	Operating Force	3.5 N
	Travel	0.75 mm
Endurance	Operating Life	100,000 cycles min.
Operating Temperature		-40 °C to +90 °C
Storage Temperature		-40 °C to +90 °C (Bulk) -20 °C to +60 °C (Taping)
Minimum Quantity/Packing Unit		2,000 pcs. Embossed Taping (Reel Pack)
Quantity/Carton		10,000 pcs.

Note: Non washable

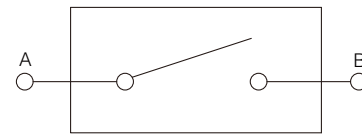
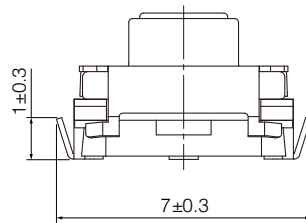
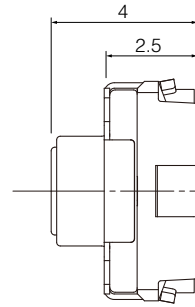
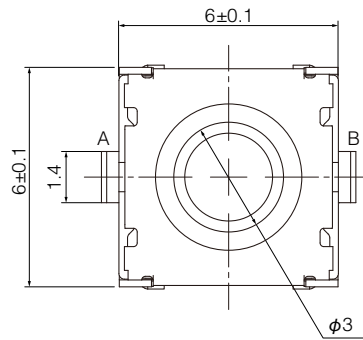
Design and specifications are each subject to change without notice. Ask factory for the current technical specifications before purchase and/or use.
Should a safety concern arise regarding this product, please be sure to contact us immediately.

■ Dimensions in mm (not to scale)

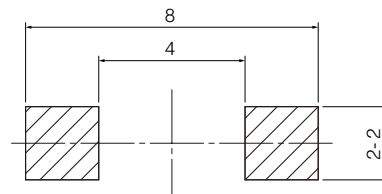
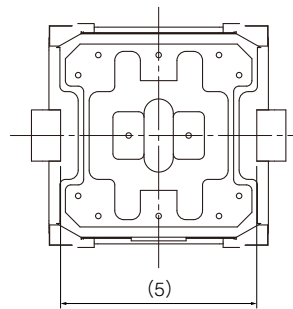
EVPBD

(Embossed Taping)

General dimension tolerance : ± 0.2
 () dimensions are reference dimensions.



Circuit diagram



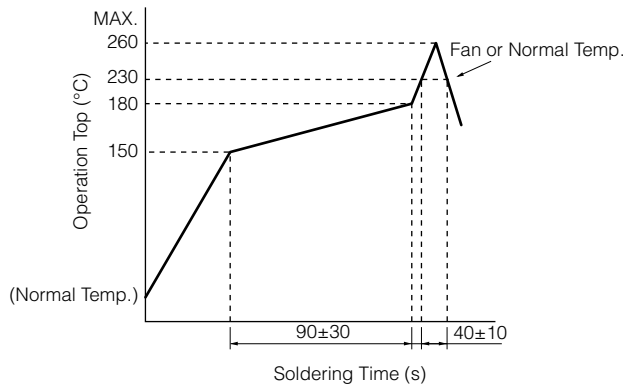
Land pattern plan

Soldering thickness $t=0.15\pm0.03$

Part Numbers	Operating Force	Height	Operating Life
EVPBD6C1A000	3.5 N	4.0 mm	100,000 cycles

Design and specifications are each subject to change without notice. Ask factory for the current technical specifications before purchase and/or use.
 Should a safety concern arise regarding this product, please be sure to contact us immediately.

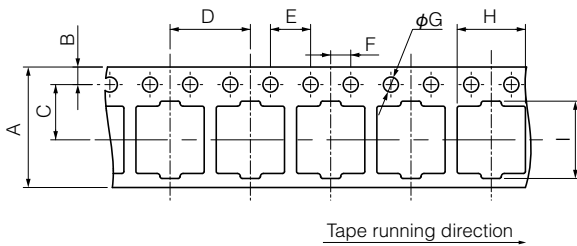
■ Recommended Reflow Soldering Conditions



* Reflow temperature may vary by location even in the same reflow condition. Please check the reflow temperature at terminals and at the top of a switch to make sure the both temperatures are within the specification. If even one of them is out of the specifications, please adjust.

● Embossed Carrier Taping

Tape width=12.0 mm (A=12.0 mm)



Taping condition : Lack of products in the middle of taping should be one MAX, but total quantity specified in the specifications should be secured.
 Peeling off strength of top tape : It should be within 0.2N to 1.0N at 165 degree in peeling off angle.
 Joint of carrier tape : One joint per one reel may exist.

												Unit: mm
Part No.	Height	A	B	C	D	E	F	G	H	I	J	t
EVPBD	4.0	12.0±0.3	1.75±0.10	5.5±0.1	8.0±0.1	4.0±0.1	2.0±0.1	1.5 ^{+0.1} _{-0.1}	6.3±0.2	7.5±0.2	4.25±0.20	0.4±0.1

Requests to customers

Please refer to "the latest product specifications" when designing your product.

Requests to customers :

<https://industrial.panasonic.com/ac/e/salespolicies/>

Safety Precautions

When using our products, no matter what sort of equipment they might be used for, be sure to confirm the applications and environmental conditions with our specifications in advance.

Please contact

Panasonic Corporation

Electromechanical Control Business Division

■ 1006, Oaza Kadoma, Kadoma-shi, Osaka 571-8506, Japan
industrial.panasonic.com/ac/e/

Panasonic[®]

©Panasonic Corporation 2019