



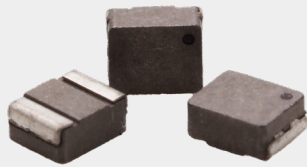
Power Inductors

Tailored for high-efficiency applications including DC/DC converters, portable devices, battery-powered equipment, and power supplies.

Offering optimal performance with MPS ICs, these inductors provide a highly efficient power solution in a compact size for industrial and commercial electronics.

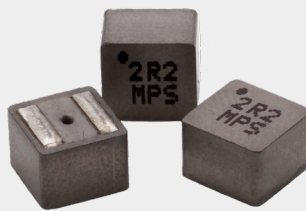
Molded Inductors

Fully shielded, combining excellent balance between soft saturation, high current stability, high efficiency, and minimal EMI.



MPL-AT Series

Low Profile
Cost-Effective Design



MPL-AL Series

Maximum Efficiency
Lowest DCR



MPL-AY Series

Wide Range of Sizes and
Inductances



MPL-SE Series

External Epoxy Resin for Better
Magnetic Characteristics

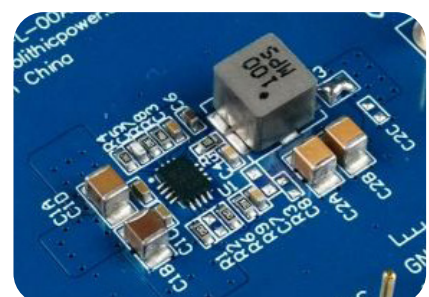
Semi-Shielded Inductors

Striking a balance between the features of non-shielded and fully shielded inductors, offering a cost-effective solution with EMI reduction compared to non-shielded inductors.

Evaluation Boards

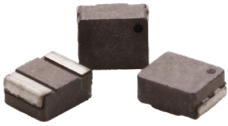
EVBs assist developers in testing circuit functionality, reducing risks, and speeding up development by predicting performance.

The EVB datasheet provides detailed information on how the device will perform with different inductors, including their functions and test results.



Molded Inductors

MPL-AT Series



Size Range

2.0x1.0
2.5x1.2

Fully Shielded

- Best Magnetic Shielding Effect
- Lowest Magnetic Flux Leakage
- Minimizing Potential Audio Noise

Start of Winding Indication

- Self-Shielding Effect for Best EMI Performance

Compact Design

- Maximizing Core Utilization for Highest Current Handling
- Highest Performance Due to the Extremely Low DC Resistance
- Robust Design Suitable for High-Stress Environments

Soft Saturation

- Wider Inductor Operating Range
- Low Inductance Drop across Current Range
- Low Ripple Current for Stable Designs
- Inductance Stable across Temperatures

L: 0.33 μ H to 22 μ H

I_{SAT}: Up to 64A

Temperature Range: -40°C to +155°

MPL-AL Series



Size Range

4.0x2.0
5.0x3.0, 5.0x5.0
6.0x5.0, 6.0x6.0

MPL-AY Series



Size Range

3.0x2.0
4.0x2.0
10x5.0
12x6.5

Semi-Shielded Inductors

MPL-SE Series



Size Range

2.5x1.2
4.0x3.0
5.0x4.0
6.0x4.0

Magnetically Shielded via External Epoxy Resin

Compared to Non-Shielded Inductors:

- Better EMI Performance
- Lower Magnetic Flux Leakage
- Better Temperature Stability

Compared to Shielded Inductors:

- Higher Current
- Cost-Effective Solution

Compact and Robust Construction

L: 0.47 μ H to 47 μ H

I_{SAT}: Up to 16A

Temperature Range: -40°C to +125°C

