



AMPHENOL **A**Series™ PRODUCT PORTFOLIO

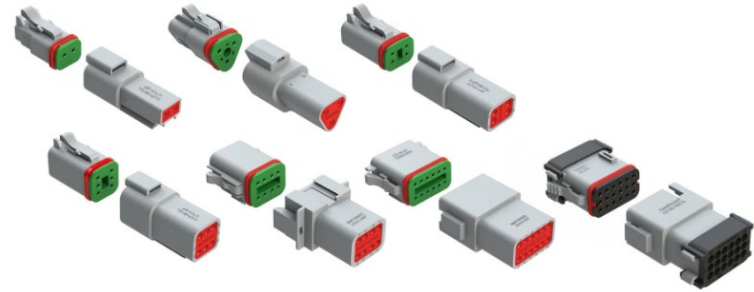
Compared to TE's Deutsch® Products

DT Series

- Contact Size 16
- 13 A
- 2, 3, 4, 6, 8 and 12way arrangements
- In-line, flange or PCB mount
- Rectangular, thermoplastic housing
- Wedglock for contact retention
- Locking Latch

AT ATSeries™

+ Incl. 18 way
compatible to Molex



Modifications,
CAN, Resistor, LED



PM Panel|Mate™ AT



BL BoardLock™ AT



DTM Series

- Contact Size 20
- 7,5 A
- 2, 3, 4, 6, 8 and 12way arrangements
- In-line, flange or PCB mount
- Rectangular, thermoplastic housing
- Wedgelock for contact retention
- Locking Latch

ATM ATMSeries™



BL BoardLock™ ATM13/15



ATM ATMSeries™ 2-Wire CAN

J1939/15 2-Wire CAN Connectors

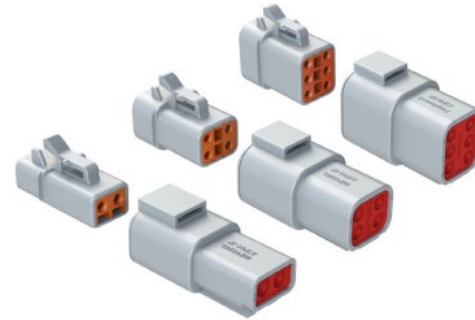


DTP Series

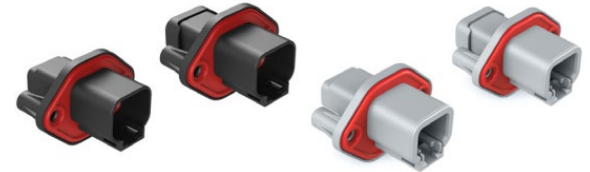
- Contact Size 12
- 25 A
- 2 and 4way arrangements
- In-line, flange or PCB mount
- Rectangular, thermoplastic housing
- Wedgelock for contact retention
- Locking Latch

ATP ATPSeries™

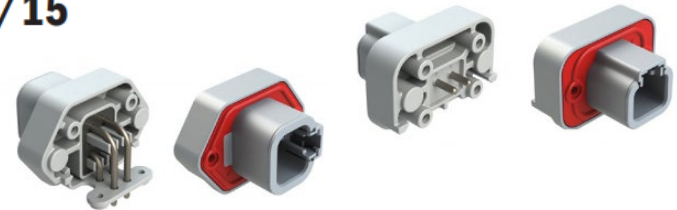
+ Brand New 6 way arrangement



PM Panel|Mate™ ATP



BL BoardLock™ ATP13/15



DTV Series

- Contact Size 16
- 13 A
- 18way arrangement
- Flange mount
- Rectangular, thermoplastic housing
- Wedgelock for contact retention
- Locking Latch

ATV **ATVSeries™**



HB **HYP=ERBUSS™** **ATV**



DTHD Series

- Contact Size 12, 8 and 4
- 25 / 60 / 100 A
- 1way arrangement
- In-line or flange mount
- Circular, thermoplastic housing
- Locking Latch

ATHD ATHD Series™



BL BoardLock™ ATFHD



HD10 Series

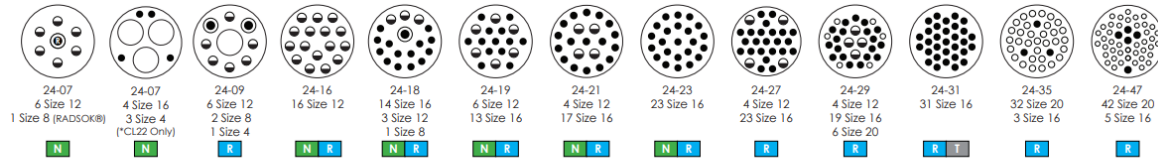
- Contact Size 16, 12 and 4
- 13 / 25 / 100 A
- 3, 4, 5, 6 and 9 way arrangement
- In-line, flange or PCB mount
- Circular, thermoplastic housing
- Coupling Ring



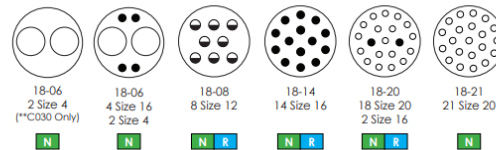
HDP20 Series

- Contact Size 20, 16, 12, 8 and 4
- 7,5 / 13 / 25 / 60/ 100 A
- 2, 6, 7, 8, 9, 14, 16, 18, 19, 20, 21, 23, 29, 31, 33, 35 and 47 way arrangement
- In-line or flange mount
- Circular, thermoplastic housing
- Coupling Ring

DM Dura|Mate™ AHDP



Contact Legend (Size/Max. Current)		
○	●	◐
20/ 7.5A	16/ 13A	12/ 25A
⊙	⦿	○
8/ 86A RADSOX®	8/ 60A	4/ 100A

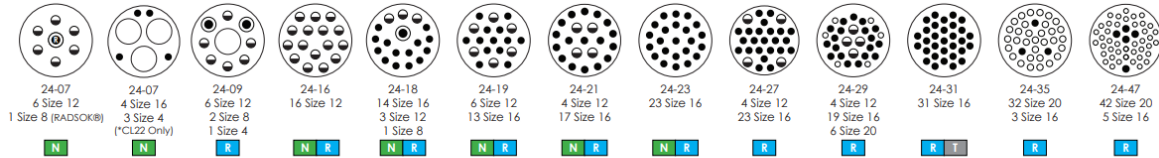


Seal Legend
Normal
Thin
Reduced (See Subpart 1)

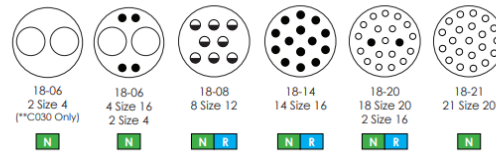
HD30 Series

- Contact Size 20, 16, 12, 8 and 4
- 7,5 / 13 / 25 / 60/ 100 A
- 2, 6, 8, 9, 14, 16, 18, 19, 20, 21, 23, 29, 31, 33, 35 and 47 way arrangement
- In-line or flange mount
- Circular, aluminum housing
- Coupling Ring

DM Dura|Mate™ AHDM



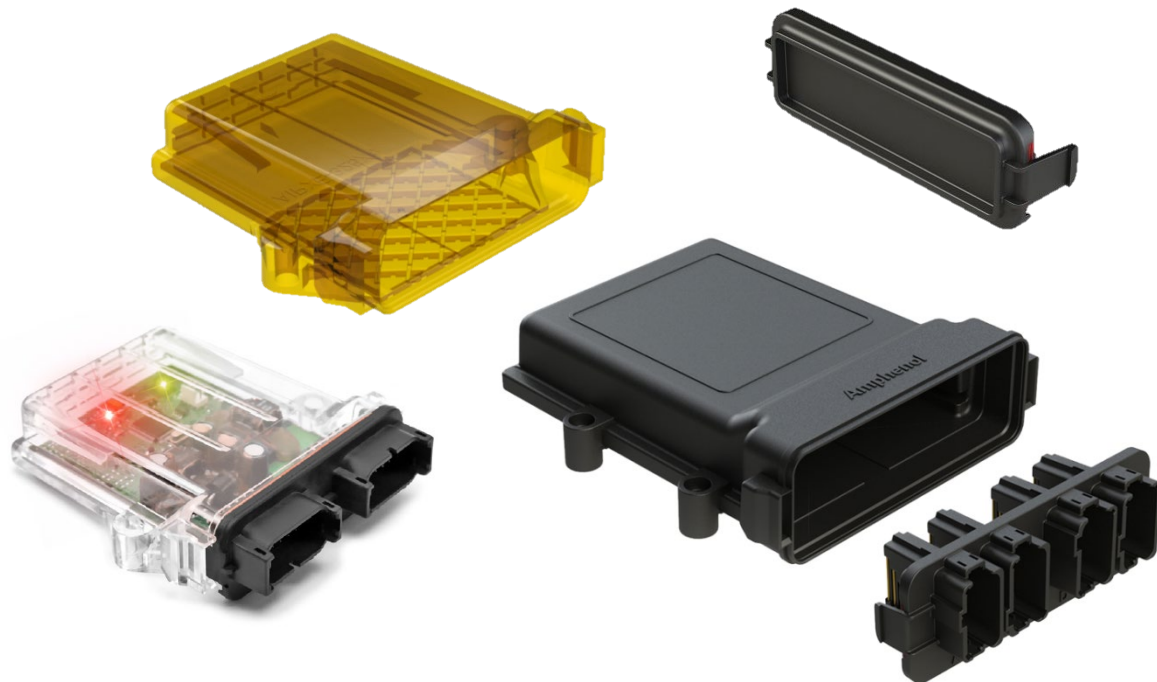
Contact Legend (Size/Max. Current)		
○	●	◐
20/ 7.5A	16/ 13A	12/ 25A
⊙	⦿	○
8/ 86A RADSOX®	8/ 60A	4/ 100A



Seal Legend
Normal
Thin
Reduced (See Subheader)

Printed Circuit Board Enclosures and Headers

- Enclosures with snap-in headers
- Through hole mounting flange
- Venting option
- 90° Headers with DT or DTM interface
- Mate with DT and DTM standard plugs



MOUNTING CLIPS

A ASeries™ Clips



BOOTS

A ASeries™ Boots



DUST CAPS

A ASeries™ Caps



JIFFY SPLICE

SpeedSplice™



CONTACTS

SEALING PLUGS

TOOLING

A Series™ Contacts



The image features two white, futuristic robotic hands, one on the left and one on the right, each holding a silver interconnect cable. The hands are positioned as if they are shaking hands, symbolizing partnership. The background is a dark blue gradient with faint, out-of-focus images of interconnect components. The central text is in large, bold, white capital letters.

YOUR PARTNER FOR INTERCONNECT SOLUTIONS